

## Seville K

1992 SQ FT

2177 Koshal Way SW



- 3 Bedrooms, 2.5 bath home with a vaulted ceiling bonus room
- 9' Ceilings on Main Floor
- Luxury Vinyl Plank floors in Divine Quest Into The Wild color
- 2018 Evolve Samsung Appliance Package Included
- Quartz counters all throughout in Caesarstone Ocean Foam
- Upgraded Kitchen Craft Cabinets in Maple Sizzle with Veneer ends
- Includes 1 bank of pot and pan drawers
- Upgraded kitchen backsplash to Tier 3 mosaic tiles
- Triple tandem garage
- Linear Electric Fireplace
- 4 Piece ensuite with rectangular soaker tub
- Upgraded stub wall to railing in Mindful Grey color with square Tek Black metal spindles on main floor and 2nd floor
- 2nd floor laundry room
- Black interior hardware package
- Triple Pane Low E Argon filled Energy Star rated windows
- Heat Recovery Ventilator, high efficiency furnace and hot water tank
- 367.50 m2 lot with South- facing backyard

### One at Keswick Showhome

2113 Koshal Way, Edmonton

587.521.6580

[oneatkeswick@bedrockhomes.ca](mailto:oneatkeswick@bedrockhomes.ca)

Job # KWK 0-033917 Lot 51, Block 11, Plan 162-2397

### Notes:

---

---

---

---

---

---

**bedrockhomes.ca**

VISIT US AT ANY OF OUR SHOWHOMES!

Monday - Thursday 3-8pm, Weekends & Holidays 12-5PM



# Seville K

1992 SQ FT  
2177 Koshal Way SW



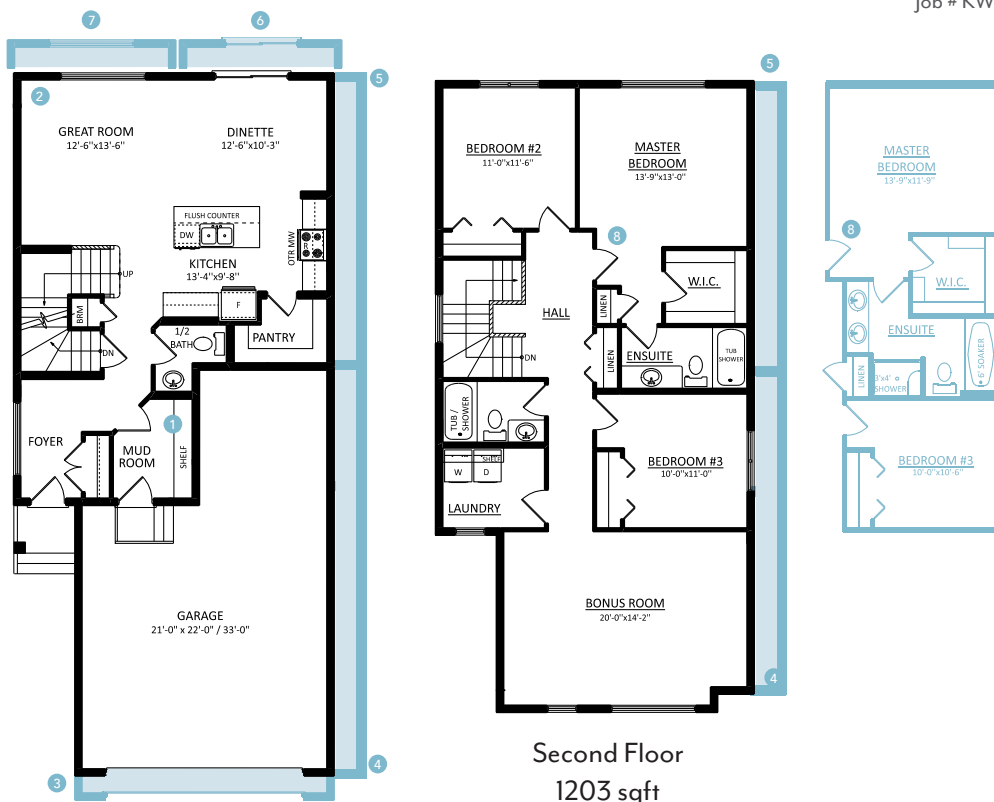
## One at Keswick Showhome

2113 Koshal Way, Edmonton

587.521.6580

[oneatkeswick@bedrockhomes.ca](mailto:oneatkeswick@bedrockhomes.ca)

Job # KWK 0-033917 Lot 51, Block 11, Plan 162-2397



[bedrockhomes.ca](http://bedrockhomes.ca)

VISIT US AT ANY OF OUR SHOWHOMES!

Monday - Thursday 3-8pm, Weekends & Holidays 12-5PM

