

Kennedy K

2204 SQ FT
2136 Koshal Way SW



- 2 storey, 3 bedroom home with vaulted ceiling bonus room and upper laundry (3 bedrooms upstairs, 1 bedroom on main floor)
- 9' ceiling on main floor with 41" cabinets with riser to bulkhead
- Upgraded ensuite with 4' wide shower, double sinks and corner soaker tub
- Samsung appliance package
- Gas fireplace with cultured stone in great room
- Hardwood and tile flooring on main floor, bathrooms and laundry
- 1 ¼" quartz counters in kitchen and main floor bathroom
- Railing with metal spindles from main to 2nd floor

One at Keswick Showhome

2113 Koshal Way SW, Edmonton AB.
587.521.6580
oneatkeswick@bedrockhomes.ca

Job # KWK-0-033911 Lot 14 Block 14, Plan 162 1833

Notes:

bedrockhomes.ca

VISIT US AT ANY OF OUR SHOWHOMES!

Monday - Thursday 3-8pm, Weekends & Holidays 12-5PM



Kennedy K

2204 SQ FT
2136 Koshal Way SW



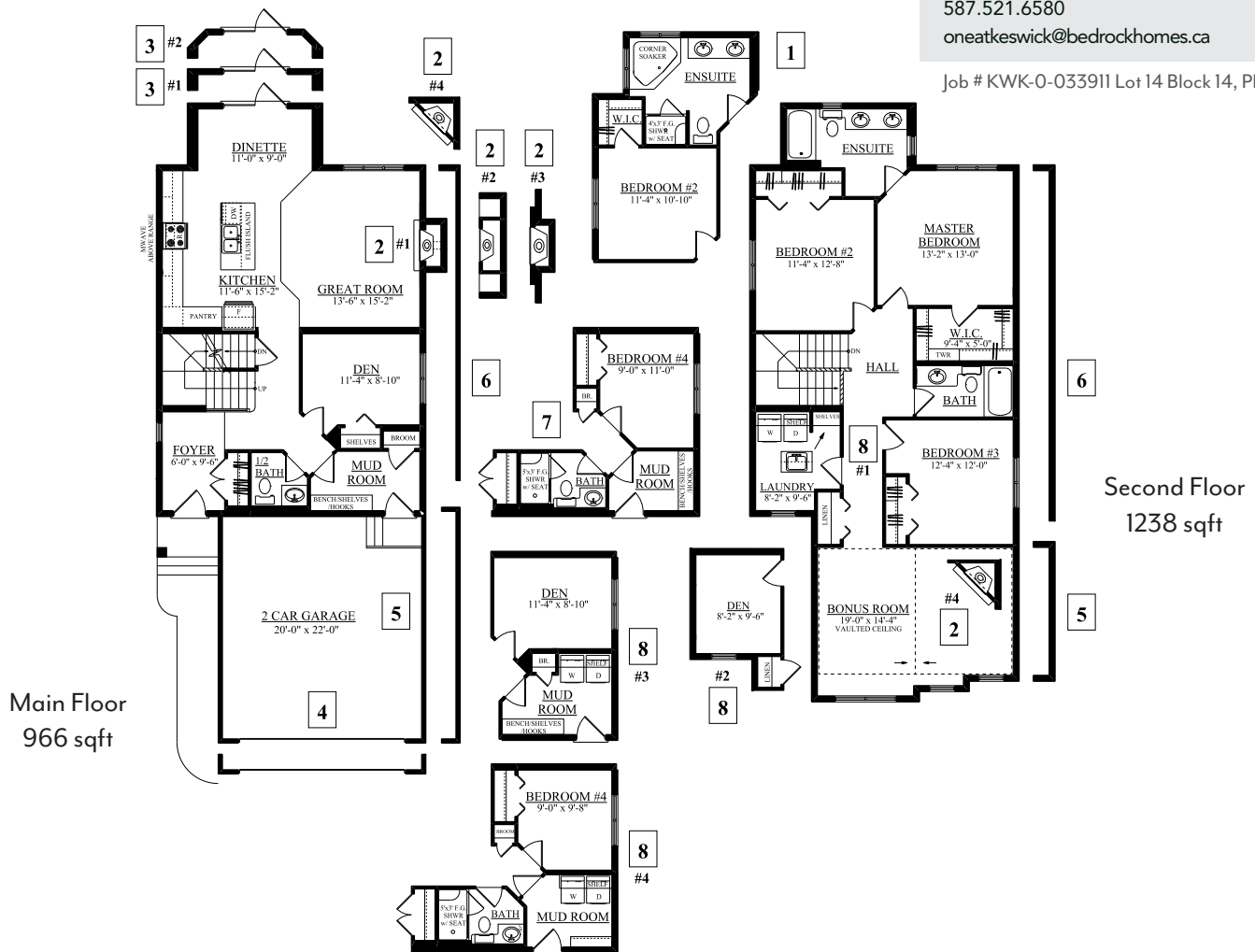
One at Keswick Showhome

2113 Koshal Way SW, Edmonton AB.

587.521.6580

oneatkeswick@bedrockhomes.ca

Job # KWK-0-033911 Lot 14 Block 14, Plan 162 1833



bedrockhomes.ca

VISIT US AT ANY OF OUR SHOWHOMES!

Monday - Thursday 3-8pm, Weekends & Holidays 12-5PM

