

Madison K

1913 SQ FT

2116 Koshal Way SW



- 3 Bedroom, 2.5 bath home with a bonus room
- 4 piece Ensuite to Master Bedroom
- Main Floor Laundry
- 9' Main Floor Ceiling
- Upgraded USB Charging Port Outlets
- Linear Electric Fireplace
- Upgraded Kitchen Backsplash
- Includes Standard Samsung appliance package
- Triple Pane Low E Argon filled Energy Star rated windows
- Heat Recovery Ventilator, high efficiency furnace and hot water tank
- 364.06 m2 Lot with South facing backyard

One at Keswick Showhome

2113 Koshal Way SW, Edmonton AB.

587.521.6580

oneatkeswick@bedrockhomes.ca

Job # KWK-0-033906 Lot 7 Block 12, Plan 162-1833

Notes:

bedrockhomes.ca

VISIT US AT ANY OF OUR SHOWHOMES!

Monday - Thursday 3-8pm, Weekends & Holidays 12-5PM



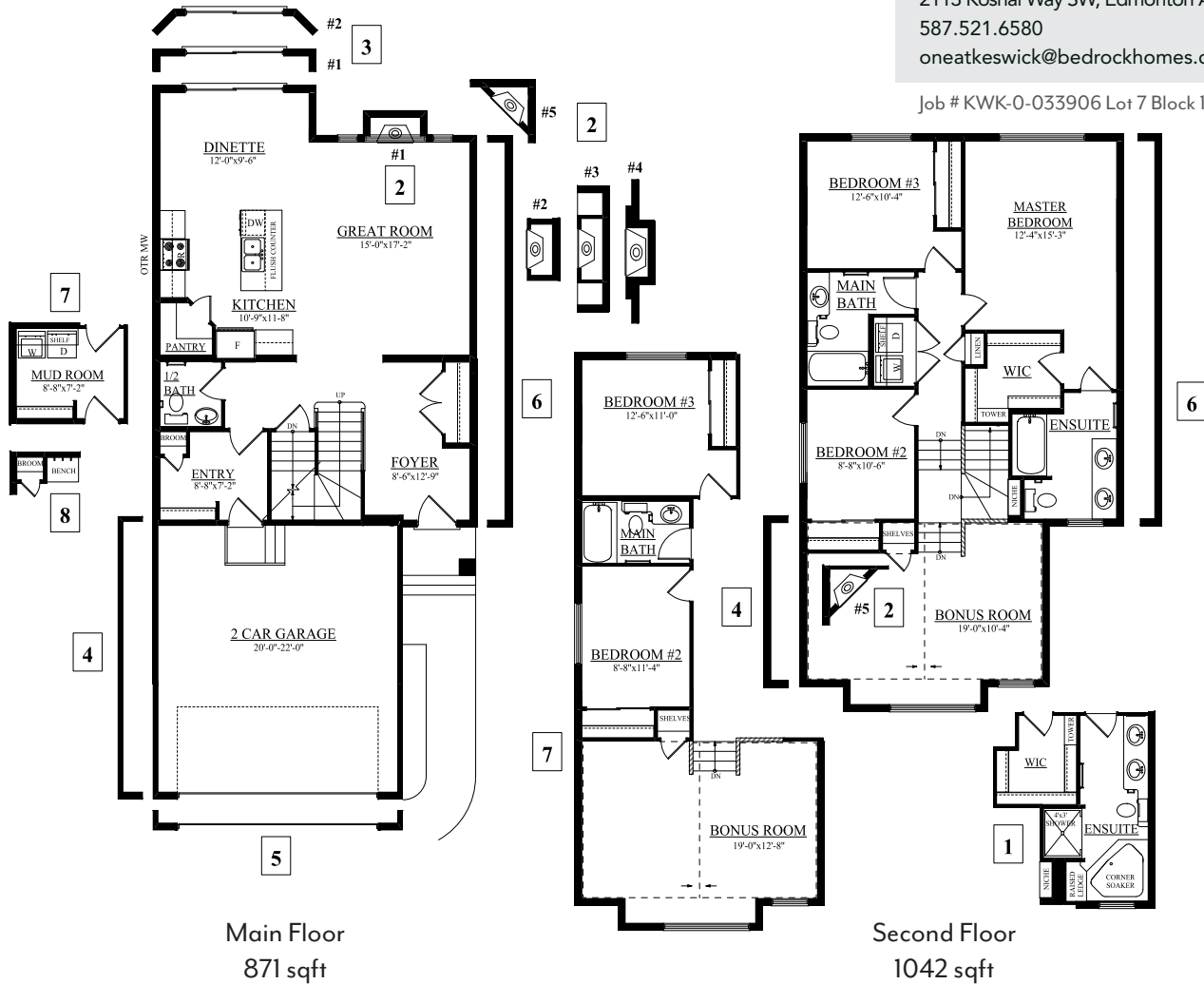
Madison K

1913 SQ FT
2116 Koshal Way SW



One at Keswick Showhome
2113 Koshal Way SW, Edmonton AB.
587.521.6580
oneatkeswick@bedrockhomes.ca

Job # KWK-0-033906 Lot 7 Block 12, Plan 162-1833



bedrockhomes.ca

VISIT US AT ANY OF OUR SHOWHOMES!
Monday - Thursday 3-8pm, Weekends & Holidays 12-5PM

