

Kennedy T

2199 SQ FT

2114 Koshal Way SW



- 2-storey home with 4th bedroom and full bath on the main floor
- 2nd floor laundry room with sink
- 9' ceilings on Main Floor with 41" upper cabinets with riser to bulkhead
- Upgraded 4-piece ensuite with 60" corner soaker, 48" wide shower and double sinks including upgrade to 50 gal hot water tank
- Samsung Standard Appliance Package
- Upgraded two-tone Kitchen Craft cabinets in Maple Tamarind Espresso and Maple Tamarind Alabaster
- 1 1/4" Quartz countertops in kitchen, main bath, ensuite and laundry complete with undermount sinks
- Mosaic glass tile backsplash in Julian Vogue Taupe in main floor kitchen and behind kitchen floating shelf
- Sidewall cantilevered fireplace with stone surround in Ivory Coast
- Paint-grade railing with straight metal spindles on main & 2nd floor
- 6' garden door with integrated blind system
- Engineered hardwood in light weight maple in foyer, great room, 1/2 bath, kitchen, pantry, dinette and bedroom 4
- Nest Smart Learning thermostat with Wi-Fi and app-based functions
- Cat5e outlets and dual USB charging ports in the kitchen and master bedroom
- 20' x 22' garage
- Triple-pane low-E argon-filled Energy Star rated windows
- Siding in Mitten Sage, Iron Ore metal trim with Cobblestone color accent. Brick in Midnight black color
- 354.40 sq. m lot

One at Keswick Showhome

2113 Koshal Way SW, Edmonton AB.

587.521.6580

oneatkeswicksales@bedrockhomes.ca

Job # KWK-0-033905 Lot 6 Block 12, Plan 162 1833

Notes:

bedrockhomes.ca

VISIT US AT ANY OF OUR SHOWHOMES!

Monday - Thursday 3-8pm, Weekends & Holidays 12-5PM

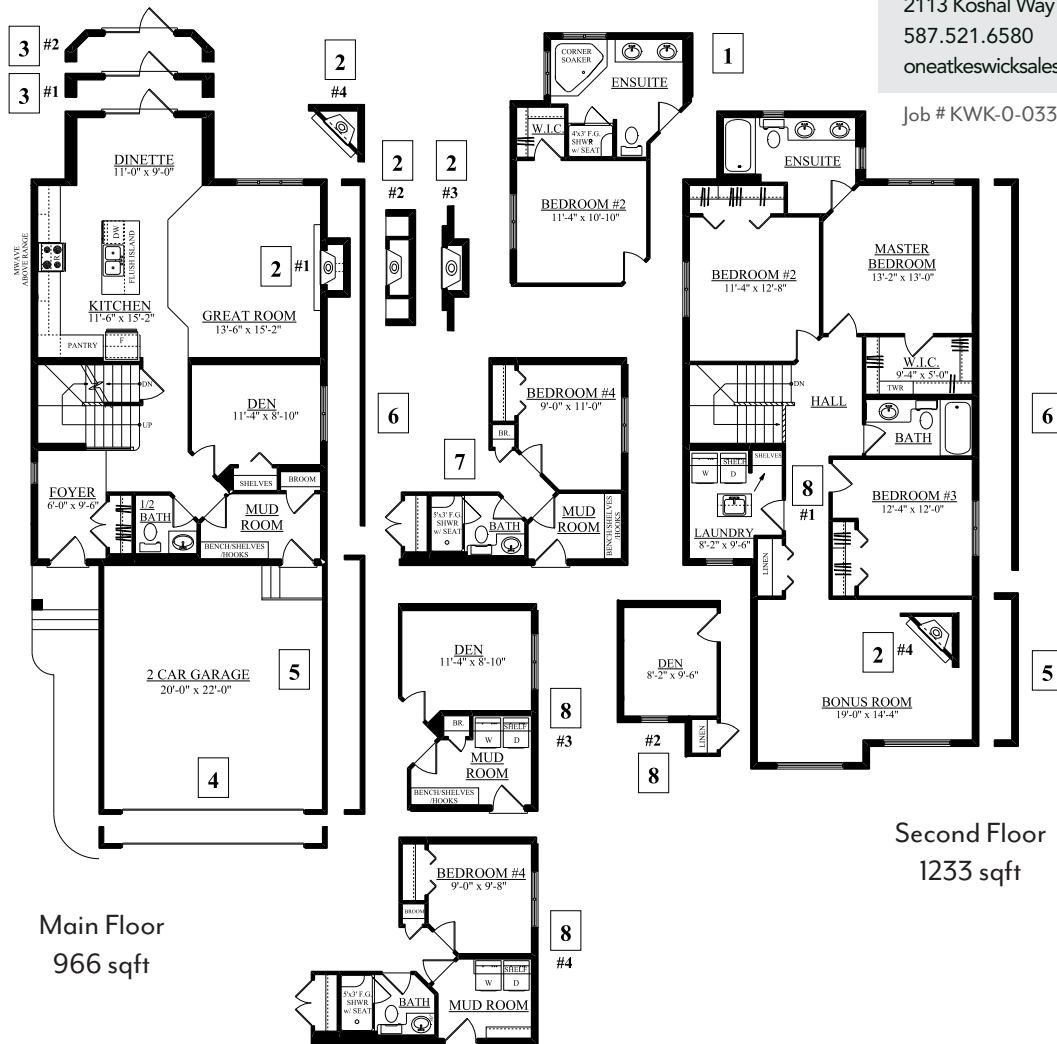


Kennedy T
 2199 SQ FT
 2114 Koshal Way SW



One at Keswick Showhome
 2113 Koshal Way SW, Edmonton AB.
 587.521.6580
 oneatkeswicksales@bedrockhomes.ca

Job # KWK-0-033905 Lot 6 Block 12, Plan 162 1833



Main Floor
 966 sqft

Second Floor
 1233 sqft

bedrockhomes.ca

VISIT US AT ANY OF OUR SHOWHOMES!
 Monday - Thursday 3-8pm, Weekends & Holidays 12-5PM

