



## ONE AT KESWICK SHOWHOME

2745 Koshal Place SW, Edmonton  
587-521-6580  
oneatkeswick@bedrockhomes.ca

Job #KWK-0-033901  
Lot 7, Block 11, Plan 162-1833

## DETAILS

- ONE at Keswick showhome now for sale! Take possession of this gorgeous home before the Holidays!
- 2 blocks away from the 1 km. stormwater pond and walking trail
- Two K-9 schools opening Fall 2022
- 32' pocket lot
- South backing yard, backing on to green space and future K-9 school
- Fully finished landscaping
- 12' x 12' 6" deck
- A/C included
- All window coverings included
- Triple tandem attached garage with man door
- Huge secluded bonus room upstairs
- 9 ft. ceilings on the main floor
- Gas fireplace in the living room
- White spindle railing on main and 2nd floor
- Upgraded 4 piece ensuite with two sinks, fully tiled shower walls, and a spacious soaker tub
- Classic cream-white cabinets throughout
- Dark quartz countertops in kitchen with undermount sink
- Highly Upgraded cabinetry profile, style and size
- Laminate and tile flooring
- 6 pc. Stainless Steel appliances with white washer/dryer
  - » French door refrigerator with Twin Cooling Plus and bottom freezer with ice maker
  - » 5-burner Ceran range with oven with quick-steam clean feature
  - » Over the range microwave and hoodfan combination
  - » Dishwasher with hybrid tub, auto cycle and integrated top controls
  - » Front loading washer and dryer with advanced moisture drying sensor
- Triple pane, low-E argon-filled Energy Star rated windows
- Heat recovery ventilator, high-efficiency gas furnace, and 40-gallon hot water tank
- Security system included
- And much more including 84K+ in executive selections/ upgrades all included!

# SEVILLE T

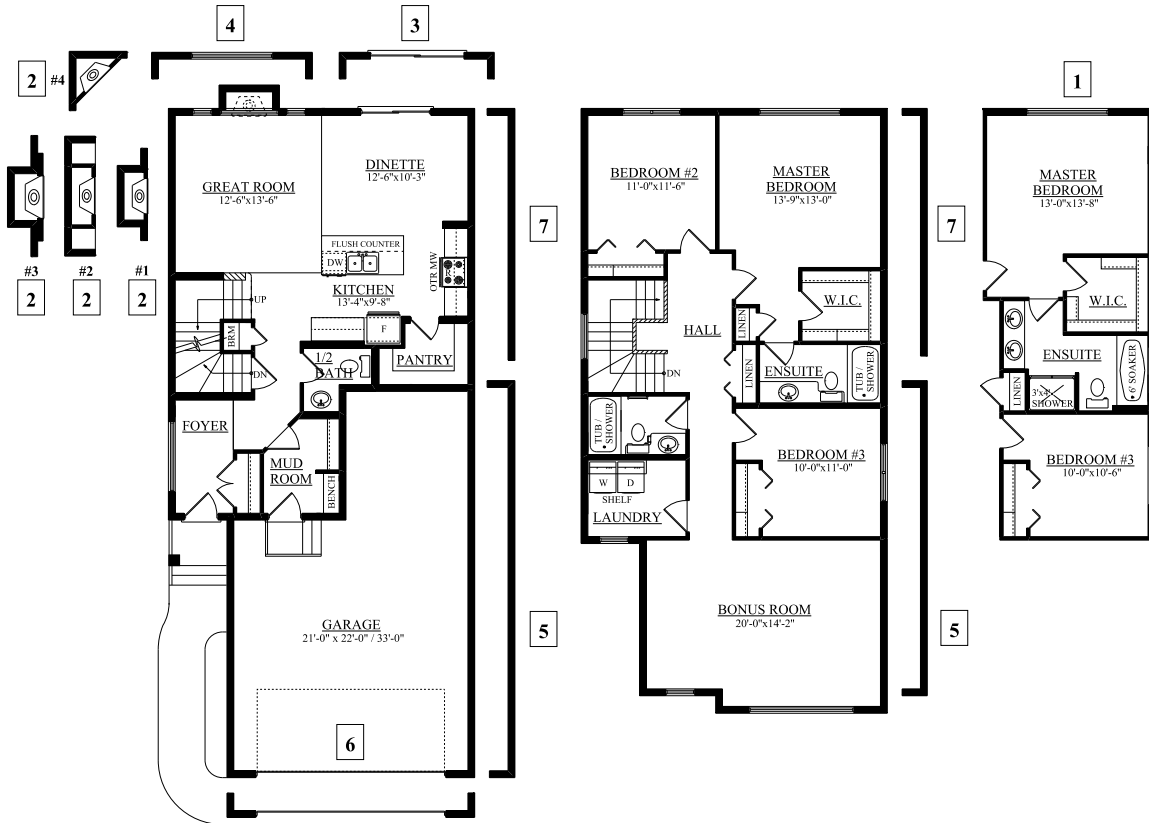
2072 SQ FT  
2115 Koshal Way SW



## ONE AT KESWICK SHOWHOME

2745 Koshal Place SW, Edmonton  
587-521-6580  
oneatkeswick@bedrockhomes.ca

Job #KWK-0-033901  
Lot 7, Block 11, Plan 162-1833



**Main Floor**  
826 SQ FT

**Second Floor**  
1246 SQ FT