

Ashbury (Windsor)

1424 SQ FT

2850 Koshal Crescent SW



- 3 bedroom, 2.5 bath, attached single car garage duplex
- Laminate floor in foyer, ½ bath, kitchen, dinette and great room
- Tile floor in mudroom, laundry room and second floor bathrooms
- Quartz countertops throughout
- 36” upper cabinets w/ floor to ceiling cabinet pantry in kitchen
- Hunter Douglas 1” aluminum blind package, with dustshield treatment
- Beautiful tile backsplash in kitchen
- LED pot and pendent lights in kitchen
- Paint grade railing with straight metal spindles on main floor
- Kitchen has stainless steel Samsung appliance package w/ white front load washer and dryer
- Second floor laundry
- Party Wall System – each half of the duplex has no shared studs or floor joists
- Front and rear landscaping
- 10’ x 10’ pressure treated wood deck with natural gas line for BBQ

One at Keswick Showhome

2113 Koshal Way SW, Edmonton AB.

587.521.6580

oneatkeswick@bedrockhomes.ca

Job # KWK-0-033674 Lot 24 Block 10, Plan 152 3091

Notes:

bedrockhomes.ca

VISIT US AT ANY OF OUR SHOWHOMES!

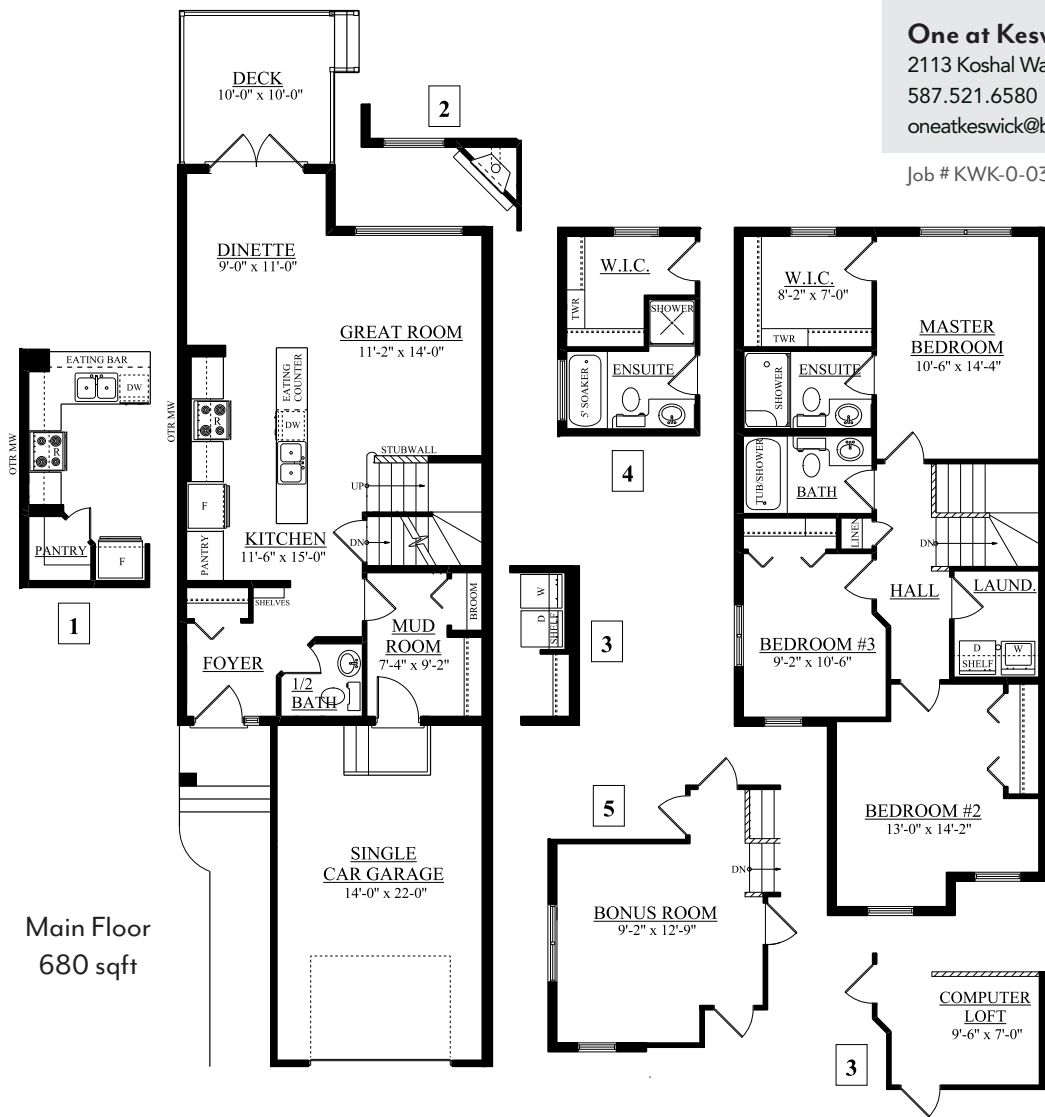
Monday - Thursday 3-8pm, Weekends & Holidays 12-5PM



Ashbury (Windsor)

1424 SQ FT

2850 Koshal Crescent SW



One at Keswick Showhome

2113 Koshal Way SW, Edmonton AB.

587.521.6580

oneatkeswick@bedrockhomes.ca

Job # KWK-0-033674 Lot 24 Block 10, Plan 152 3091

Second Floor
744 sqft

bedrockhomes.ca

VISIT US AT ANY OF OUR SHOWHOMES!

Monday - Thursday 3-8pm, Weekends & Holidays 12-5PM

