

# Aspen (Taurus)

1557 SQ FT

2812 Koshal Crescent SW



- 3 bedroom home
- Open to below in foyer
- White paint grade railing with straight metal spindles on main and second floor
- French door entrance into den on main floor
- Pendant lights over flush kitchen island
- Modern kitchen cabinets in metro wave grey
- 36" upper cabinets in kitchen
- Textured wide-plank laminate flooring
- Kohler brand faucets
- Stainless steel Whirlpool appliances
- Whirlpool frontload washer and dryer in white
- Tile in mudroom, ensuite and main bath
- Front and rear landscaping included
- Hunter Douglas aluminum blinds with dust shield
- Triple pane windows
- 11' x 10' rear deck with BBQ gas line
- Superior silence shared wall system- no shared studs or floor joists
- Siding stratus, black metal, flagstone board and batten, cobblestone and countrylane red hardie panel accents
- Bow valley mountain ledge stone
- Backyard north facing
- Lot Size: 300.4 sq. M
- 35 year shingles
- Garage 19' X 23'
- Moving service included

## One at Keswick Showhome

2910 Kostash Drive SW, Edmonton AB.

780.761.2211

oneatkeswicksales@bedrockhomes.ca

Job # KWK-0-033663 Lot 5 Block 10, Plan 152-3091

## Notes:

---

---

---

---

---

---

---

---

---

---

**bedrockhomes.ca**

VISIT US AT ANY OF OUR SHOWHOMES!

Monday - Thursday 3-8pm, Weekends & Holidays 12-5PM



# Aspen (Taurus)

1557 SQ FT

2812 Koshal Crescent SW



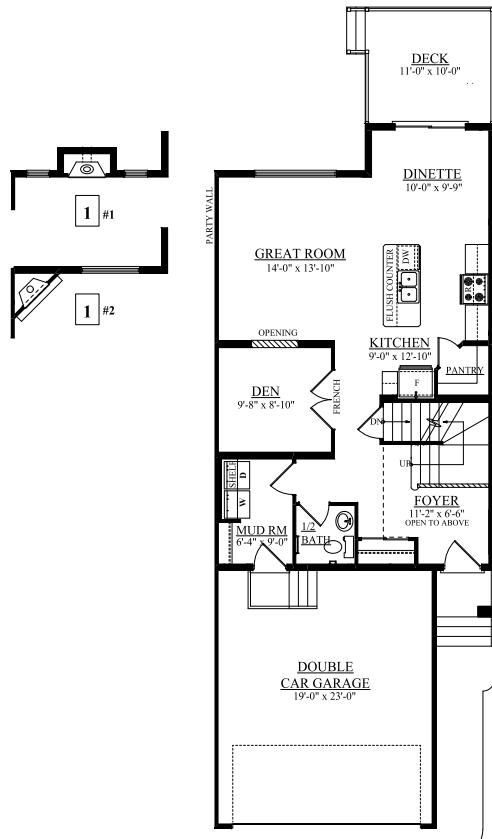
## One at Keswick Showhome

2910 Kostash Drive SW, Edmonton AB.

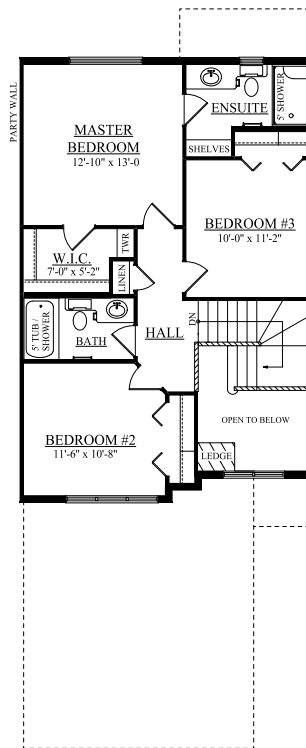
780.761.2211

oneatkeswicksales@bedrockhomes.ca

Job # KWK-0-033663 Lot 5 Block 10, Plan 152-3091



Main Floor  
855 sqft



Second Floor  
702 sqft

[bedrockhomes.ca](http://bedrockhomes.ca)

VISIT US AT ANY OF OUR SHOWHOMES!

Monday - Thursday 3-8pm, Weekends & Holidays 12-5PM

