

Hendrick T

1996 SQ FT

2916 Kostash Drive SW



One at Keswick Showhome

2910 Kostash Drive SW, Edmonton AB.

780.761.2211

oneatkeswicksales@bedrockhomes.ca

Job # KWK-0-033655 Lot 4 Block 9, Plan 152-3091

Notes:

- 2-storey, 3-bedroom home with bonus room
- Extended foyer
- Side entry to basement
- 2nd Floor laundry room
- Upgraded 4-piece ensuite with 72" rectangular soaker, 60"-wide shower and double sinks including upgrade to 50 gal hot water tank
- Samsung Standard Appliance Package
- Two-tone Kitchen Craft cabinets with 41" uppers and pots and pans drawers in Maple Tamarind Alabaster and Maple Tamarind Charcoal
- Quartz countertops in Fasa Steel color in kitchen, main bath and ensuite complete with undermount sinks
- Quartz counter for desk on main floor
- Upgraded lighting in kitchen with pot lights and island pendant lights
- Pantry with French door complete with frosted glass
- Glass tile backsplash in Vogue Grey
- Sidewall cantilevered fireplace with glass tile mantle
- Railing with metal spindles on Main & 2nd Floor
- 6' garden door with integrated blind system
- 5" engineered hardwood with flush mount vents in main hall, ½ bath, kitchen, pantry, dinette, great room
- Concrete Chic Stylish Charcoal ceramic tiles in foyer
- Nest Smart Learning thermostat with Wi-Fi and app-based functions
- Cat5e outlets and dual USB charging ports in the main floor desk area and master bedroom
- 9' ceilings on main floor
- 9' basement foundation walls with accommodated rough-in for future basement suite
- 22'x22'/31' tandem garage
- Triple-pane low-E argon-filled Energy Star rated windows
- Sage siding, iron ore trim with pewter green accent
- Midnight black brick
- 389.90 sq. m lot with west-facing backyard

bedrockhomes.ca

VISIT US AT ANY OF OUR SHOWHOMES!

Monday - Thursday 3-8pm, Weekends & Holidays 12-5PM



Hendrick T

1996 SQ FT

2916 Kostash Drive SW



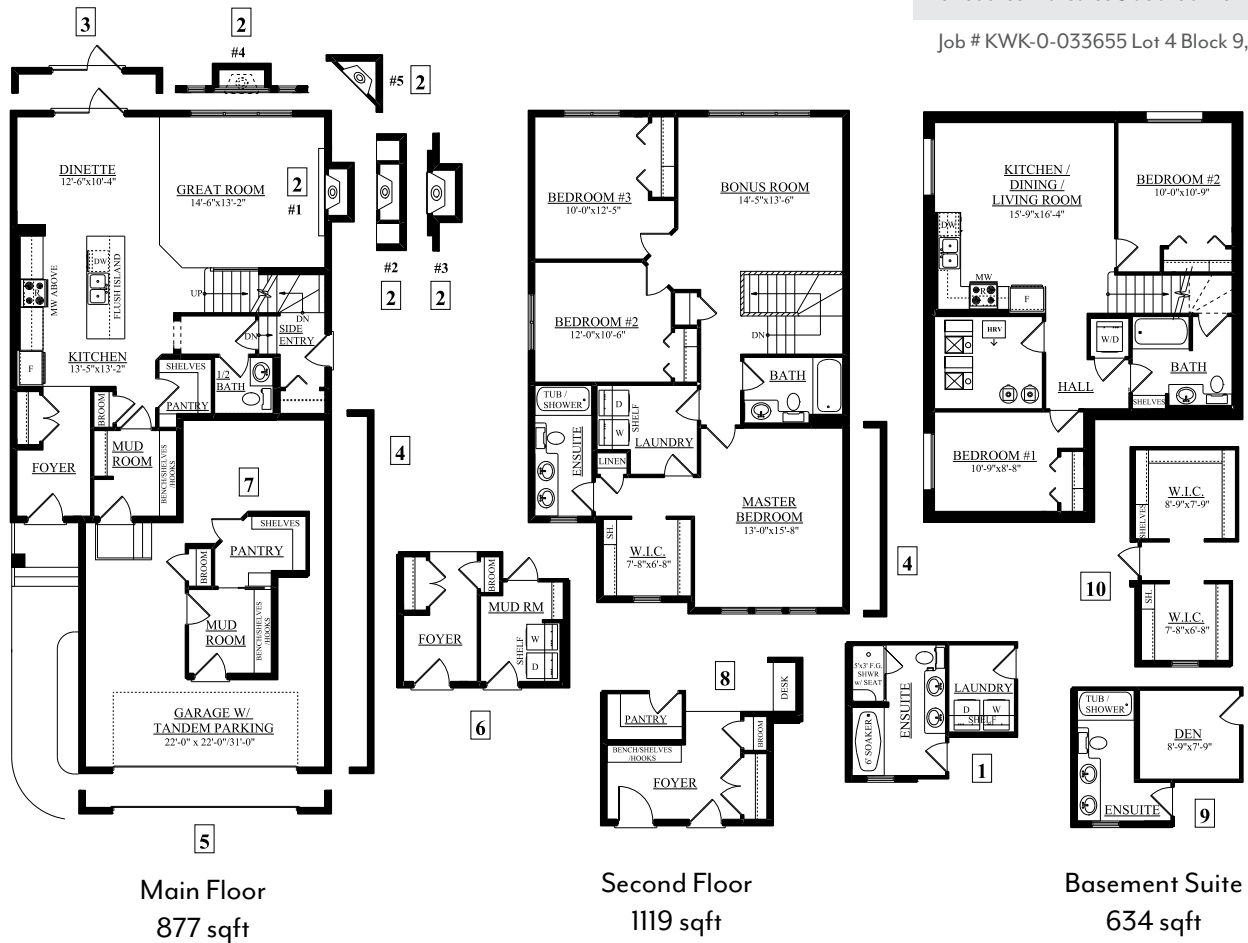
One at Keswick Showhome

2910 Kostash Drive SW, Edmonton AB.

780.761.2211

oneatkeswicksales@bedrockhomes.ca

Job # KWK-0-033655 Lot 4 Block 9, Plan 152-3091



bedrockhomes.ca

VISIT US AT ANY OF OUR SHOWHOMES!

Monday - Thursday 3-8pm, Weekends & Holidays 12-5PM

