



ONE AT KESWICK SHOWHOME

2113 Koshal Way SW, Edmonton
587-521-6580
oneatkeswick@bedrockhomes.ca

Job #KWK-0-034740
Lot 44, Block 12, Plan 172-3548

DETAILS

- 2 blocks away from the 1 km. stormwater pond and walking trail
- Two K-9 schools opening Fall 2022
- Brilliant Home Technology (includes built-in control panel, video doorbell, smart Ecobee thermostat, programmable LED lights, built-in Alexa capability, and access to the Brilliant Home app)
- 9 ft. ceilings on the main floor
- Upgraded splatter texture ceiling throughout (as opposed to popcorn ceiling)
- LED pot lights throughout
- Electric fireplace
- Spindle railing on main and 2nd floor
- Upgraded 4 piece ensuite option with fully tiled shower walls and fiberglass base
- White 41" cabinets in kitchen, pot and pan drawers, with soft-close throughout (KitchenCraft Maple Tamarind Alabaster)
- Grey 1 1/4 inch quartz countertops in kitchen and upstairs bathrooms with undermount sinks (Hanstone Uptown Grey)
- White ceramic subway tile backsplash in kitchen (Tierra Sol 4x12 Bevel Edge Arctic White Gloss)
- Luxury vinyl plank flooring throughout the main floor and wet areas (Divine Quest Miss Sunshine)
- Stain-proof carpeting upstairs (Mohawk True Harmony Silverado)
- 6 pc. Stainless Steel appliances with white high-efficiency front load washer/dryer
- Triple pane, low-E argon-filled Energy Star rated windows
- Heat recovery ventilator, high-efficiency gas furnace, and 50-gallon hot water tank



ONE AT KESWICK SHOWHOME

2113 Koshal Way SW, Edmonton

587-521-6580

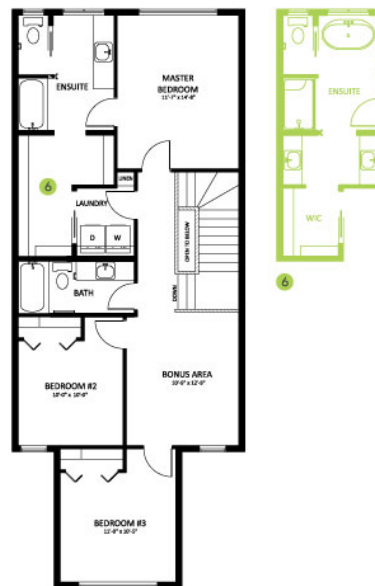
oneatkeswick@bedrockhomes.ca

Job #KWK-0-034740

Lot 44, Block 12, Plan 172-3548



Main Floor
924 SQ FT



Second Floor
1004 SQ FT