



BEDROCK
HOMES

RYLEE K

1989 SQ FT
5399 Lark Landing



KINGLET SHOWHOME

5708 Lark Point NW, Edmonton
825-512-1050
kinglet@bedrockhomes.ca

Job # KNG-035293
Lot 81, Block 3, Plan 222-0235

DETAILS

- This home checks all the boxes and more! This gorgeous home is situated on a pond backing lot with a walkout basement, 3 bedrooms, 2.5 bathrooms, second floor bonus room, walk through pantry and more!
- Soaring 9'4" foundation walls, huge windows and a patio sliding door completes the walkout basement.
- Open concept main floor with a huge island offering ample seating and prep space for your home chef!
- Relax after a long day in your spacious great room complete with a sleek electric fireplace.
- The deck overlooks the pond and offers a great spot to catch the sunset, host family BBQ's or just sit back and take in the surrounding nature with a good book.
- Your primary oasis features a huge bedroom - perfect for a King sized bed, 2 sinks in the ensuite - no more need to share with your partner!
- Second floor laundry room offers convenience. No more hauling laundry up and down flights of stairs in this home!
- 6 piece Samsung appliance package included; stainless steel kitchen appliances, white front load washer and dryer.
- Sleek spindle railing cascades from the second floor down to the main offering an open and airy feel.
- HRV providing a continuous air flow throughout entire home to not only exhaust stale, humid air and odours from home but also reduce condensation, mold, mildew, etc
- Triple pane low E argon filled energy star rated windows; contributing to cost and energy efficiency.

BUILT TO LAST \ \ **BEDROCKHOMES.CA**

SPEC 2023 - Bedrock Homes Ltd. reserves the right to modify floorplans, renderings, elevations and features in a continuing effort to improve product quality. Floorplans, specifications & prices are subject to change without notice. Errors & omissions exempt.



BEDROCK
HOMES

RYLEE K

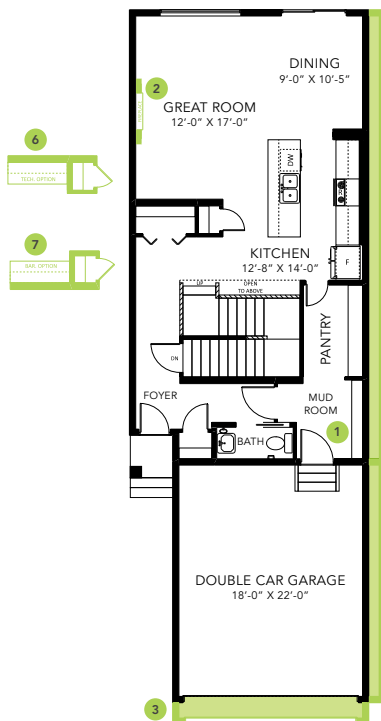
1989 SQ FT
5399 Lark Landing



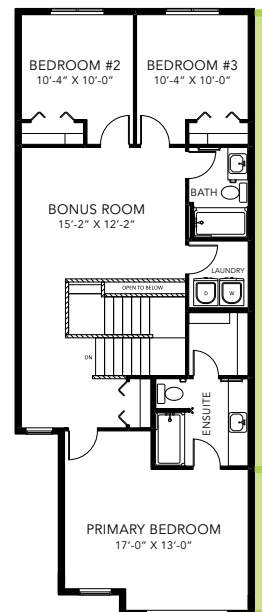
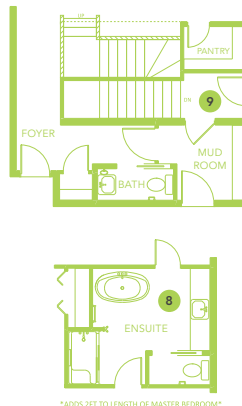
KINGLET SHOWHOME

5708 Lark Point NW, Edmonton
825-512-1050
kinglet@bedrockhomes.ca

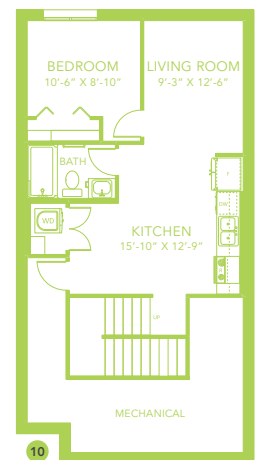
Job # KNG-035293
Lot 81, Block 3, Plan 222-0235



Main Floor
922 SQ FT



Second Floor
1067 SQ FT



BUILT TO LAST \ BEDROCKHOMES.CA

SPEC 2023 - Bedrock Homes Ltd. reserves the right to modify floorplans, renderings, elevations and features in a continuing effort to improve product quality. Floorplans, specifications & prices are subject to change without notice. Errors & omissions exempt.