



BEDROCK
HOMES

ATHENA K

1660 SQ FT
TBD



KINGLET SHOWHOME

5708 Lark Point NW, Edmonton
825-512-1050
kinglet@bedrockhomes.ca

Job # KNG-035084
Lot 26, Block 5, Plan TBD

DETAILS

- Additional value of upgrades \$10,710.00
- Stop scrolling you found your new affordable home!! Featuring 3 bedrooms, 2.5 baths, second floor laundry and a spacious bonus room
- Work from home in this cozy main floor office which is situated at the front of your home so you can see who's arriving.
- Your new Kitchen comes equipped with quartz counter-tops and a nice sized corner pantry to store your groceries and small appliances.
- Also on the main floor you have railing that allows flow throughout the home.
- Brilliant Smart Home - What does it do? Almost everything! Ask it to control the Ecobee Thermostat, Lock the door using a smart lock and more!
- Close the door to your primary suite and enjoy your own ensuite with a large walk in closet.
- 6 piece Samsung appliance package included; stainless steel kitchen appliances, white front load washer and dryer.
- HRV providing a continuous air flow throughout entire home to not only exhaust stale, humid air and odours from home but also reduce condensation, mold, mildew, etc.
- Out back you will find a parking pad with curbs for two vehicles. Ask us about building your garage or do it when your are ready!
- Brilliant Smart Home - What does it do? Almost everything! Ask it to control the Ecobee Thermostat, Lock the door using a smart lock and more!

ATHENA K

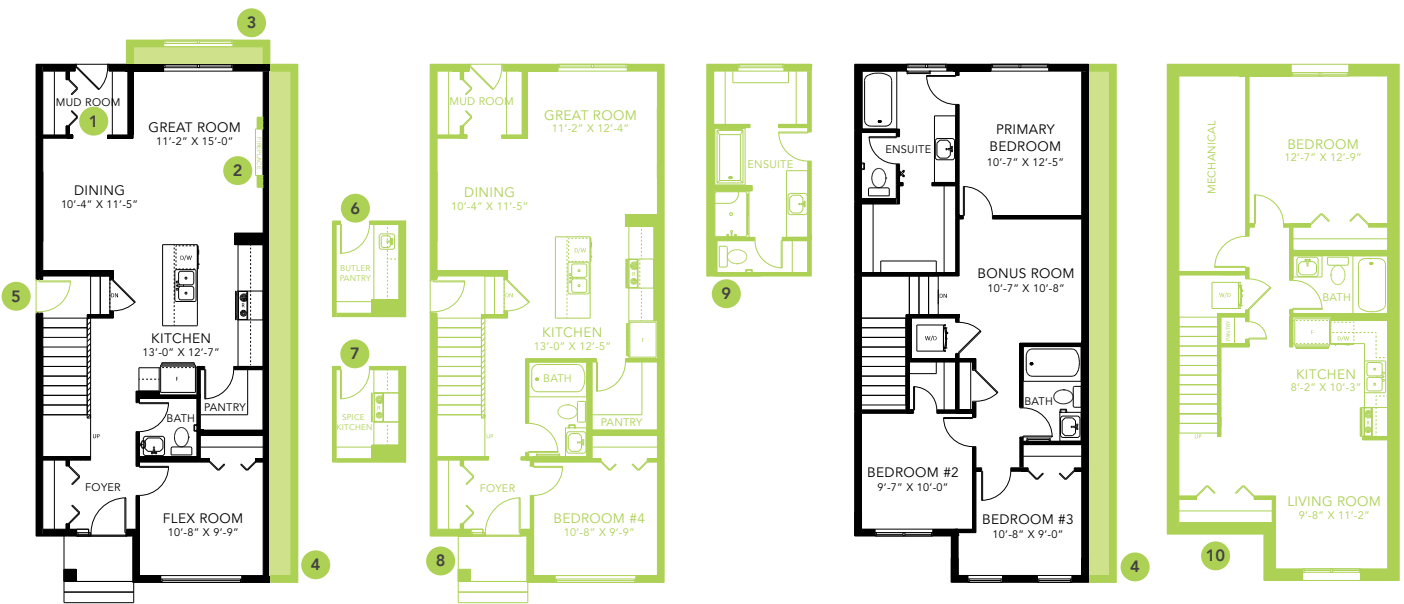
1660 SQ FT
TBD



KINGLET SHOWHOME

5708 Lark Point NW, Edmonton
825-512-1050
kinglet@bedrockhomes.ca

Job # KNG-035084
Lot 26, Block 5, Plan TBD



Main Floor
857 SQ FT

Second Floor
803 SQ FT