



**BEDROCK**  
HOMES

# RUNDLE H

1430 SQ FT  
5218 Lark Crescent NW



## KINGLET SHOWHOME

5708 Lark Point NW, Edmonton  
825-512-1050  
kinglet@bedrockhomes.ca

Job # KNG-035083  
Lot 25, Block 5, Plan 222-0235

## DETAILS

- Have you seen the kitchen? Wow! So much counter for you creative cooks! To top it off this home has 3 bedrooms and 2.5 bathrooms.
- Take two steps down to your great room and watch TV or just sit by your Electric linear fire place with timer and various settings located in the great room. Change the color of your flame to fit your mood.
- Upstairs you'll find three bedrooms one being the Primary's Oasis. Soak in the tub and release the stresses of the day! In your Oasis you will find enough space for your king-size bed and don't worry about clothes storage, we gave you a walk-in closet!
- Don't worry about appliances we have you covered with a 4 piece stainless steel Kitchen package, that's not all, in your laundry room you will find your front load washer and dryer! I know right?
- Wait that's not all, this is a Brilliant Smart Home - What does it do? Almost everything! Ask it to control the Ecobee Thermostat, Lock the door using a smart lock and more!
- Just when you thought we were done, we added Triple pane low E argon filled energy star rated windows; contributing to cost and energy efficiency.
- This home has everything you need to feel safe, comfortable and allows you the possibility of expanding your family with comfort knowing with a Bedrock Home you will save money!
- Out back you will find a parking pad with curbs for two vehicles. Ask us about building your garage or do it when your are ready!
- Not enough space? Develop the basement for more living space! This could be your forever home or your stepping stone to another. Either or it's a great home.
- Brilliant Smart Home - What does it do? Almost everything! Ask it to control the Ecobee Thermostat, Lock the door using a smart lock and more.
- HRV providing a continuous air flow throughout entire home to not only exhaust stale, humid air and odours from home but also reduce condensation, mold, mildew, etc.
- To top your kitchen off Bedrock Homes adds 6 Samsung appliances included is stainless steel kitchen appliances, and white front load washer and dryer for your upstairs laundry room.

# RUNDLE H

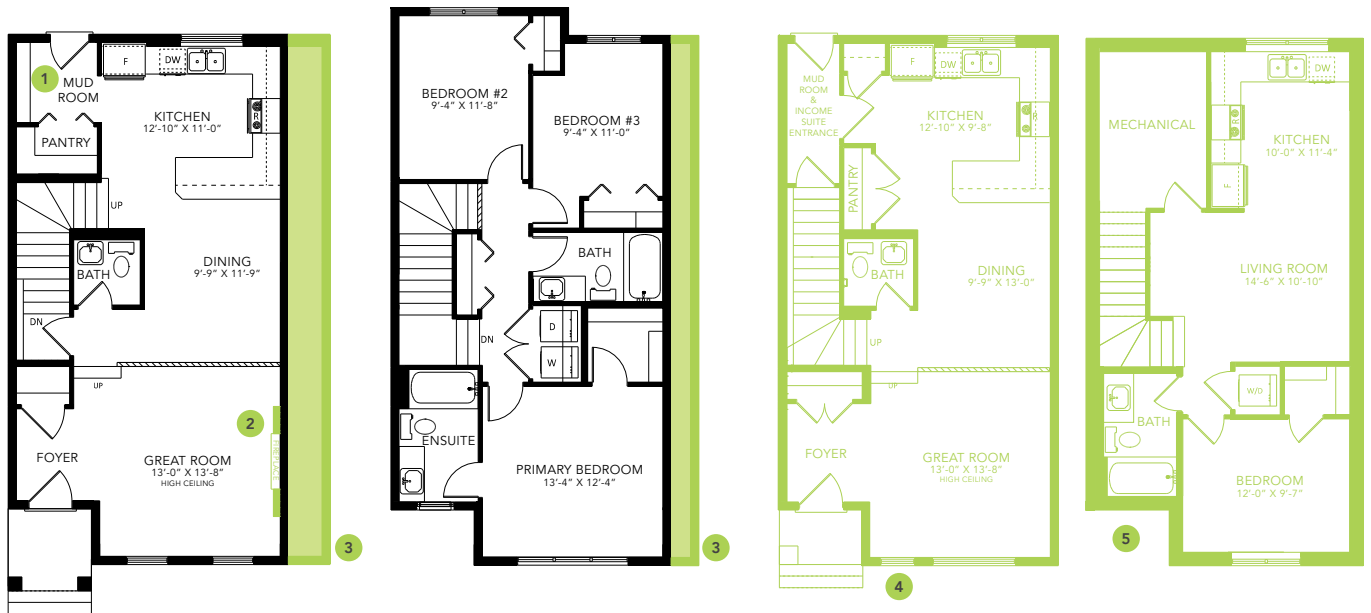
1430 SQ FT  
5218 Lark Crescent NW



## KINGLET SHOWHOME

5708 Lark Point NW, Edmonton  
825-512-1050  
kinglet@bedrockhomes.ca

Job # KNG-035083  
Lot 25, Block 5, Plan 222-0235



**Main Floor**  
736 SQ FT

**Second Floor**  
694 SQ FT