



BEDROCK
HOMES

ELENA B

2088 SQ FT
5387 Lark Landing



KINGLET SHOWHOME

5708 Lark Point NW, Edmonton
825-512-1050
kinglet@bedrockhomes.ca

Job # KNG-035081
Lot 77, Block 3, Plan 222-0235

DETAILS

- This 2088 sq ft home is made for those who love to entertain! Large open main floor is lets you speak to all your guests from anywhere!
- With 3 bedrooms, Bonus and Walk through pantry, 9ft floors on main and walk out basement, this beautiful home checks many boxes!
- Entertain in your backyard from your walkout basement or deck off the dining room
- Watch movies with your family in the bonus room!
- Conveniently located Laundry room on the second floor.
- The Primary bedroom is large enough to easily fit a King-size bed, with steps away from the ensuite and walk in closet.
- Railing on the main floor keeps the large room feel flowing.
- 6 piece Samsung appliance package included; stainless steel kitchen appliances, white front load washer and dryer.
- Triple pane low E argon filled energy star rated windows; contributing to cost and energy efficiency
- HRV providing a continuous air flow throughout entire home to not only exhaust stale, humid air and odours from home but also reduce condensation, mold, mildew, etc.

BUILT TO LAST \ \ **BEDROCKHOMES.CA**

SPEC 2023 - Bedrock Homes Ltd. reserves the right to modify floorplans, renderings, elevations and features in a continuing effort to improve product quality. Floorplans, specifications & prices are subject to change without notice. Errors & omissions exempt.

ELENA B

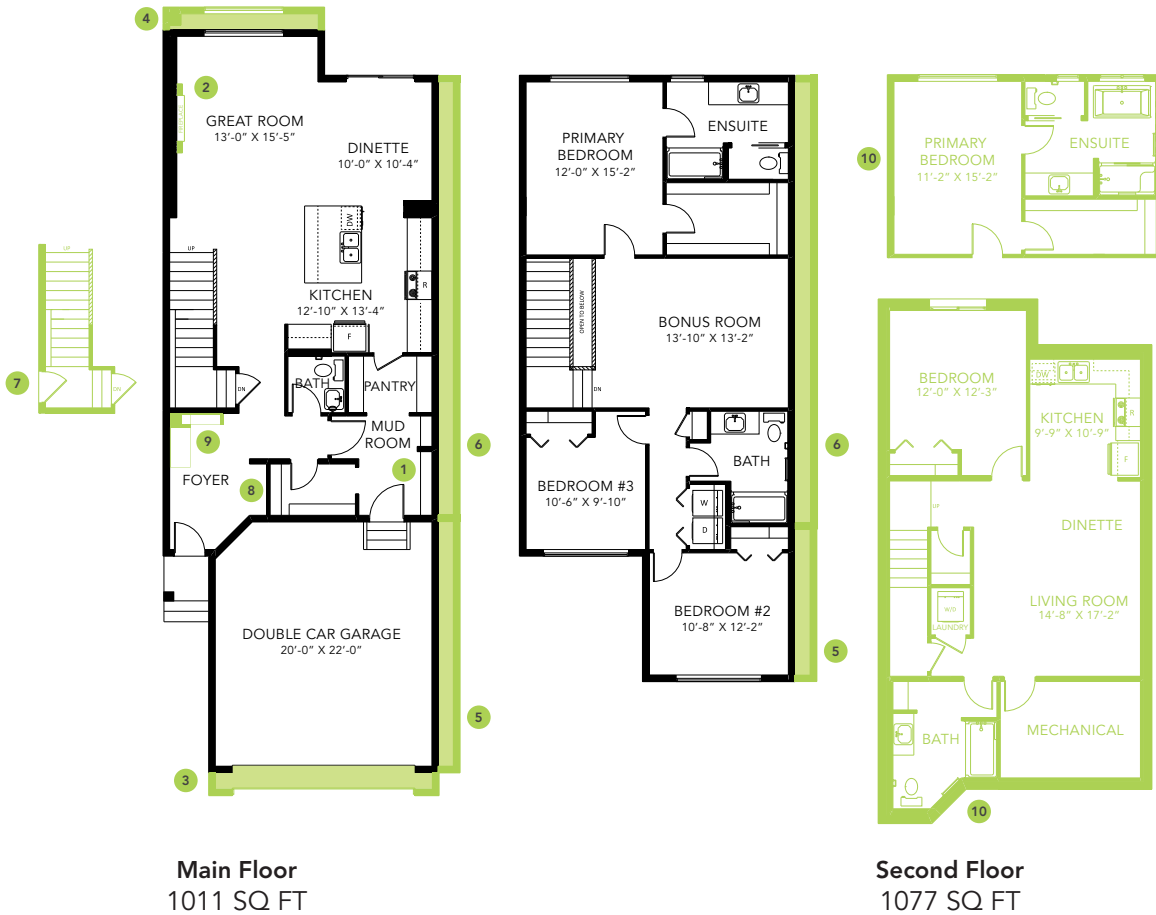
2088 SQ FT
5387 Lark Landing



KINGLET SHOWHOME

5708 Lark Point NW, Edmonton
825-512-1050
kinglet@bedrockhomes.ca

Job # KNG-035081
Lot 77, Block 3, Plan 222-0235



ELENA B