



BEDROCK
HOMES

RYLEE P

1989 SQ FT
9 Ashbury Crescent



JESPERDALE IN ASPEN GLEN SHOWHOME

3 Prospect Place, Spruce Grove
587.461.7809
jesperdale@bedrockhomes.ca

Job # JSP - 0-035486
Lot 5, Block 31, Plan 222-2217

DETAILS

- Steps from Park and running trails
- Grand open to above central staircase
- 3 Bedrooms, 2.5 bathrooms and bonus room upstairs
- 18 x 22 Attached Double Car Garage
- Walkthrough Pantry and Mudroom
- 9' Ceilings on Main floor
- 6 pc Samsung Stainless Steel Appliances with white high efficiency front load washer/dryer
- Upgraded Kitchen Backsplash
- Dual sinks in ensuite
- LED pot lights throughout
- Upgraded Siding to a Premium Color
- Electric Fireplace in great room
- Paint Grade Railing with Straight Metal Spindles
- Luxury Vinyl plank throughout
- Quartz throughout
- Smart Home Package
- Upstairs laundry
- Upgraded Overhead Garage Door
- 41" Kitchen Upper Cabinets
- Heat recovery ventilator
- Triple pane, Low-E argon filled Energy Star rated windows

BUILT TO LAST \ \ **BEDROCKHOMES.CA**

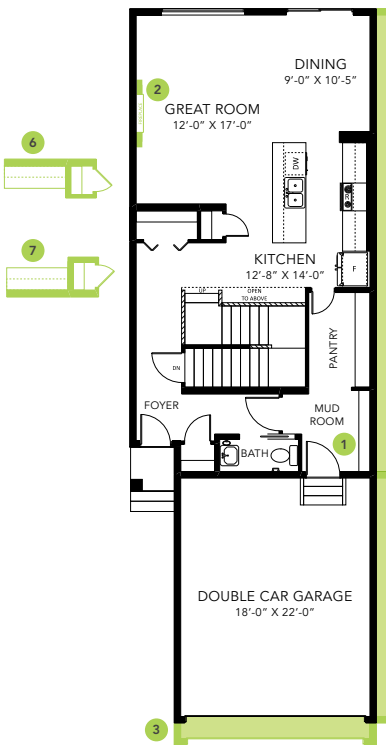
SPEC 2023 - Bedrock Homes Ltd. reserves the right to modify floorplans, renderings, elevations and features in a continuing effort to improve product quality. Floorplans, specifications & prices are subject to change without notice. Errors & omissions exempt.



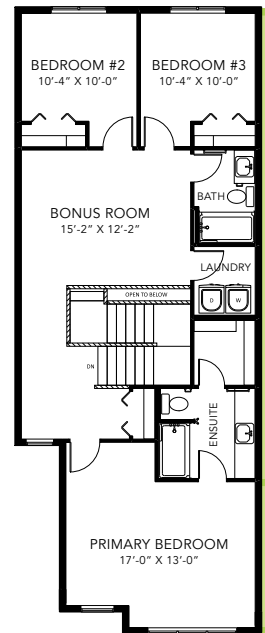
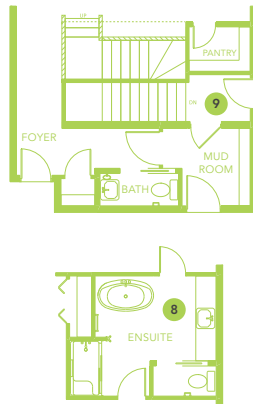
JESPERDALE IN ASPEN GLEN SHOWHOME

3 Prospect Place, Spruce Grove
587.461.7809
jesperdale@bedrockhomes.ca

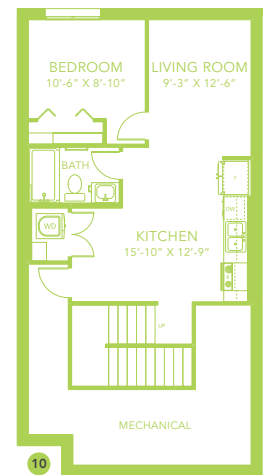
Job # JSP - 0-035486
Lot 5, Block 31, Plan 222-2217



Main Floor
922 SQ FT



Second Floor
1067 SQ FT



RYLEE P