

Callie P
2350 SQ FT
13 Adelaide Court



- 3 Bedrooms, 2.5 bathrooms with a bonus room
- 9' Ceilings on main floor
- Samsung appliance package included
- Upgraded to a premium color siding
- Linear electric fireplace in great room
- Upgraded cabinets and island in kitchen, main bath and ensuite
- Main and second floor has paint grade railing with straight metal spindles
- Private office on the main floor
- Backing onto the green space/park
- Quartz countertops throughout
- Master suite includes walk-in closet and ensuite
- Laundry room is upstairs

Jesperdale Showhome

1237 Calahoo Road, Spruce Grove
587.461.7730
jesperdale@bedrockhomes.ca

Job # JSP-0-034379 Lot 37, Block 28, Plan 1823118

Notes:

bedrockhomes.ca

VISIT US AT ANY OF OUR SHOWHOMES!
Monday - Thursday 3-8pm, Weekends & Holidays 12-5PM

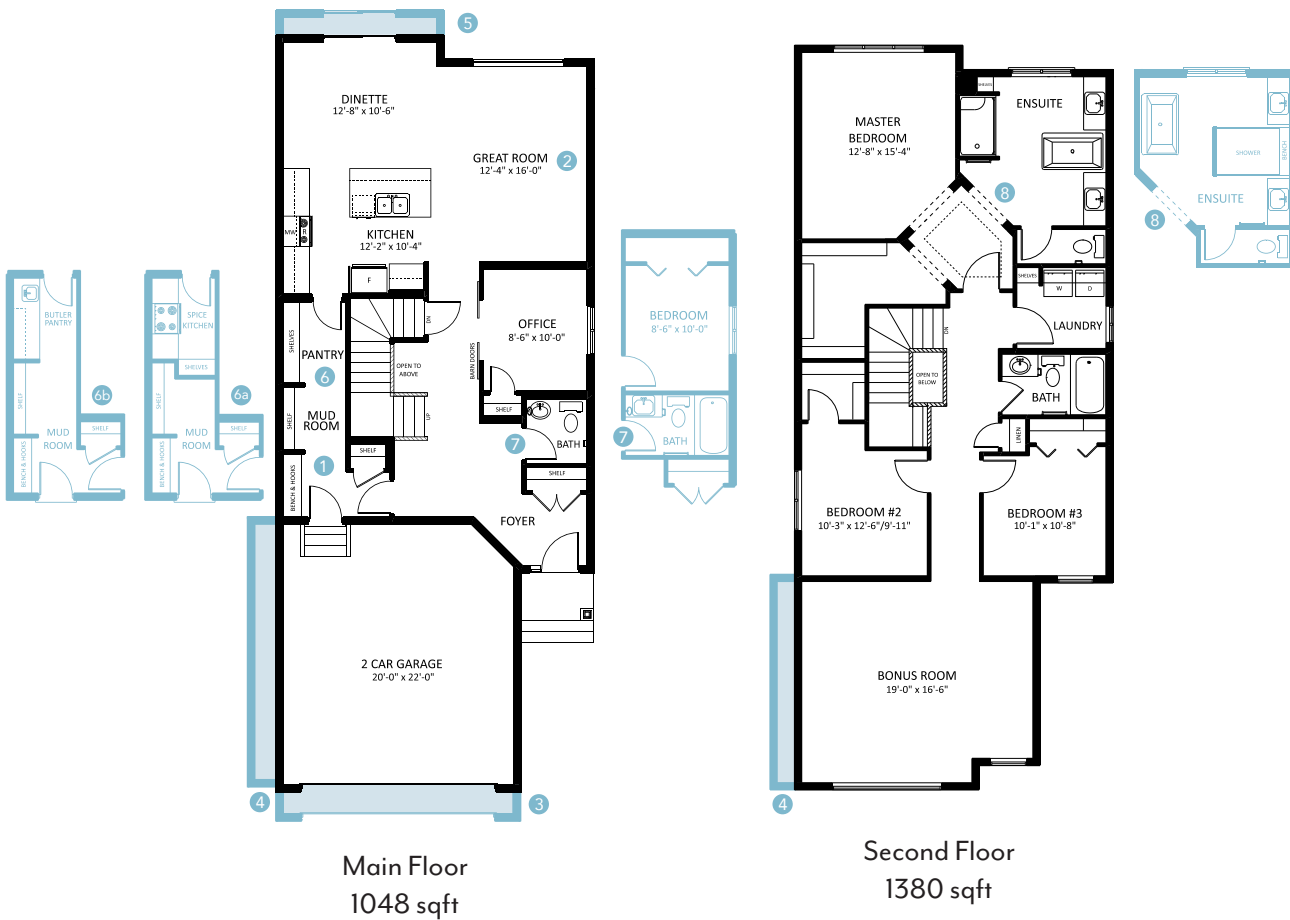


Callie P
 2350 SQ FT
 13 Adelaide Court



Jesperdale Showhome
 1237 Calahoo Road, Spruce Grove
 587.461.7730
 jesperdale@bedrockhomes.ca

Job # JSP-0-034379 Lot 37, Block 28, Plan 1823118



bedrockhomes.ca

VISIT US AT ANY OF OUR SHOWHOMES!
 Monday - Thursday 3-8pm, Weekends & Holidays 12-5PM

