

# Kingston H

1932 SQ FT

49 Adelaide Court



- 3 Bedrooms, 2.5 bathrooms with bonus room
- 9' Ceilings on main floor
- Samsung appliance package included
- Upgraded to a premium color siding
- Linear electric fireplace in great room
- Upgraded kitchen cabinets
- Paint grade railing with straight metal spindles on the main and 2nd floor
- Backing onto the green space/creek
- Quartz countertops throughout
- Laundry room is upstairs

## Jesperdale Showhome

1237 Calahoo Road, Spruce Grove

587.461.7730

[jesperdale@bedrockhomes.ca](mailto:jesperdale@bedrockhomes.ca)

Job # JSP-0-034373 Lot 19, Block 28, Plan 182 3118

### Notes:

---

---

---

---

---

---

---

[bedrockhomes.ca](http://bedrockhomes.ca)

VISIT US AT ANY OF OUR SHOWHOMES!

Monday - Thursday 3-8 PM, Weekends & Holidays 12-5 PM

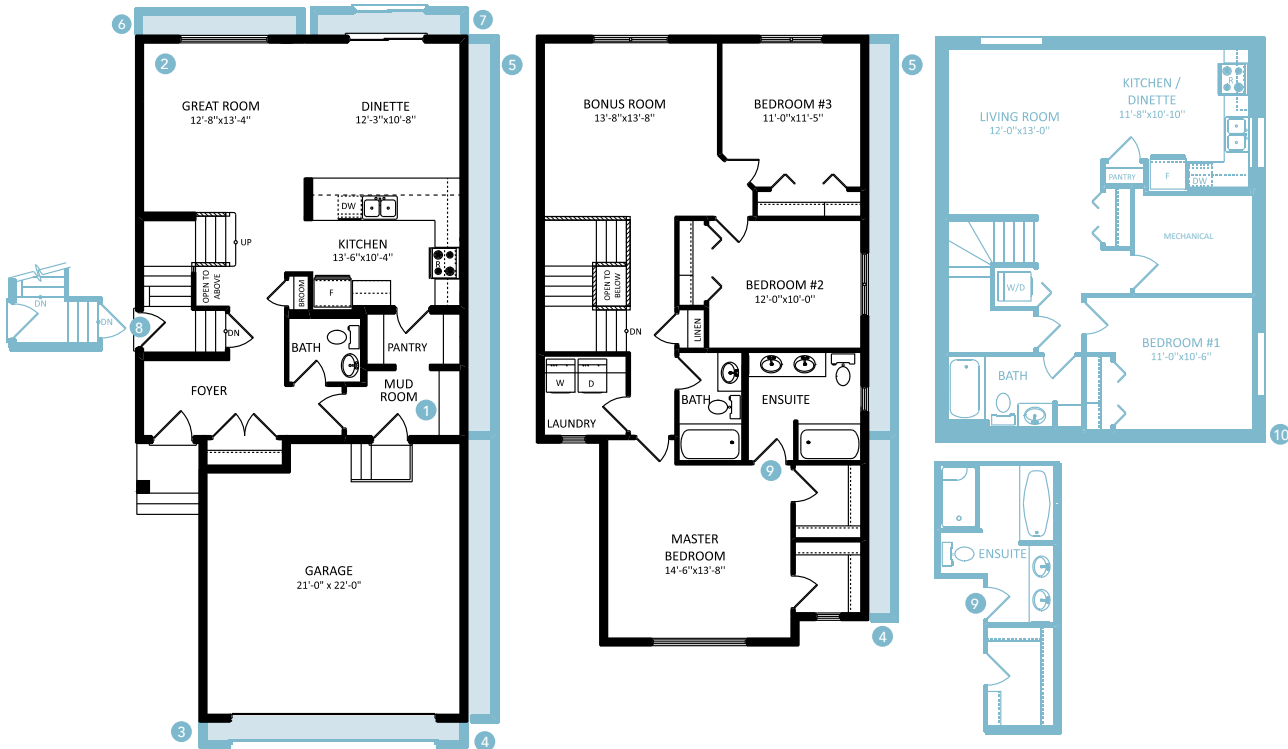


**Kingston H**  
 1932 SQ FT  
 49 Adelaide Court



**Jesperdale Showhome**  
 1237 Calahoo Road, Spruce Grove  
 587.461.7730  
 jesperdale@bedrockhomes.ca

Job # JSP-0-034373 Lot 19, Block 28, Plan 182 3118



Main Floor  
 858 SQ FT

Second Floor  
 1084 SQ FT

[bedrockhomes.ca](http://bedrockhomes.ca)

VISIT US AT ANY OF OUR SHOWHOMES!  
 Monday - Thursday 3-8PM, Weekends & Holidays 12-5 PM

