

**Seville H**  
1983 SQ FT  
57 Adelaide Court



- 3 Bedroom, 2.5 bath home with a bonus room
- 9' Ceilings on Main Floor
- Samsung Appliance Package Included
- 5 Piece ensuite with dual sinks, free standing tub and separate shower
- Linear Electric Fireplace in Great Room
- Upgraded stub wall to railing with metal spindles on main floor
- Triple Pane Low E Argon filled Energy Star rated windows
- Heat Recovery Ventilator, high efficiency furnace and hot water tank
- Laundry Room is upstairs
- Quiet crescent location

**Jesperdale Showhome**

1237 Calahoo Road, Spruce Grove  
587.461.7730  
jesperdale@bedrockhomes.ca

Job # JSP-0-034372 Lot 15, Block 28, Plan 182-3118

Notes:

---

---

---

---

---

---

---

**bedrockhomes.ca**

VISIT US AT ANY OF OUR SHOWHOMES!  
Monday - Thursday 3-8pm, Weekends & Holidays 12-5PM



**Seville H**  
 1983 SQ FT  
 57 Adelaide Court

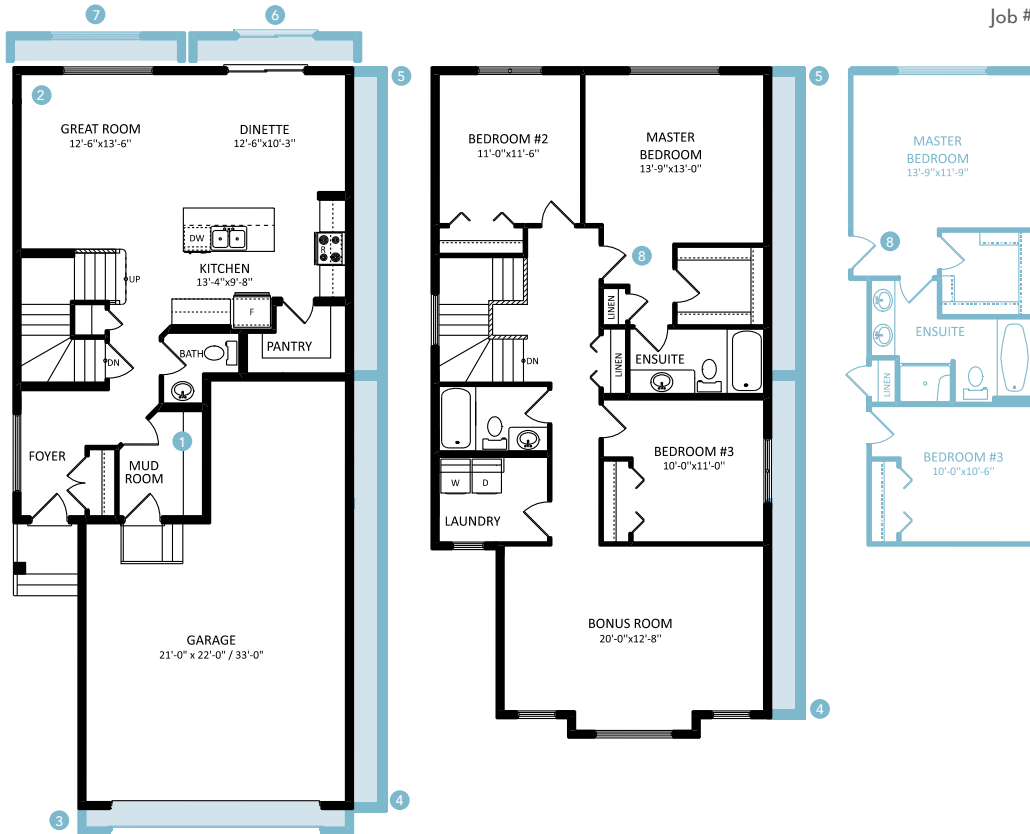


Main Floor  
 789 sqft

Second Floor  
 1194 sqft

**Jesperdale Showhome**  
 1237 Calahoo Road, Spruce Grove  
 587.461.7730  
 jesperdale@bedrockhomes.ca

Job # JSP-0-034372 Lot 15, Block 28, Plan 182-3118



[bedrockhomes.ca](http://bedrockhomes.ca)

VISIT US AT ANY OF OUR SHOWHOMES!  
 Monday - Thursday 3-8pm, Weekends & Holidays 12-5PM

