

## The Kent (Birk)

1352 SQ FT

11 Hope Common

Spruce Grove, Alberta



- 1352 sq ft
- 2 storey, 3 bedroom, 2 ½ bath family home
- Kitchen island with flush countertops and eating counter
- Pots and Pans Drawers
- 6' Garden doors with integrated blind system
- 6 Samsung appliances – stainless steel fridge, range, over the range microwave, dishwasher (washer and dryer in white)
- 12" x 12" floor tile in half bath, rear entry, main bath and ensuite
- Hunter Douglas blinds
- Nest thermostat
- Triple pane windows
- High efficiency furnace and hot water tank
- 3 piece rough in basement ideal for future development
- Single car front attached garage (14' x 23') insulated and dry walled
- Includes front and back landscaping

### Harvest Ridge Showhome

21 & 23 Hope Common, Spruce Grove, AB.

587.286.1920

harvestridgesales@bedrockhomes.ca

Job # HRV-0-33931 Lot 7, Block 17, Plan 152 3898

Notes:

---

---

---

---

---

---

---

**bedrockhomes.ca**

VISIT US AT ANY OF OUR SHOWHOMES!

Monday - Thursday 3-8pm, Weekends & Holidays 12-5PM



# The Kent (Birk)

1352 SQ FT

11 Hope Common

Spruce Grove, Alberta



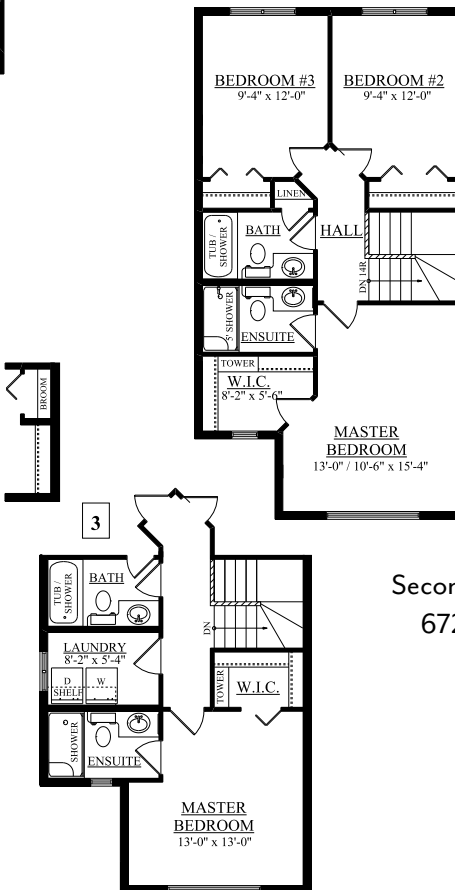
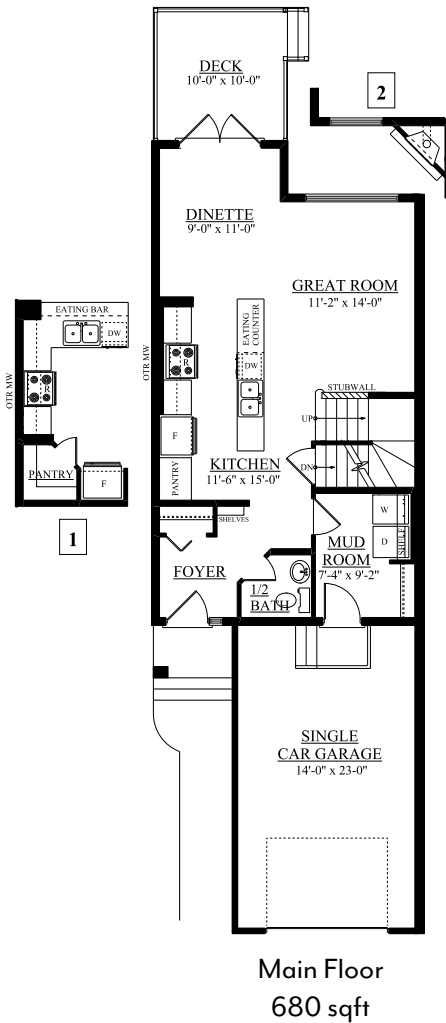
## Harvest Ridge Showhome

21 & 23 Hope Common, Spruce Grove, AB.

587.286.1920

harvestridgesales@bedrockhomes.ca

Job # HRV-0-33931 Lot 7, Block 17, Plan 152 3898



bedrockhomes.ca

VISIT US AT ANY OF OUR SHOWHOMES!

Monday - Thursday 3-8pm, Weekends & Holidays 12-5PM

