

The Kingston C

1971 SQ FT

8118 Gourlay Place NW



- Gorgeous 2 Storey, 3 Bedroom & 2 ½ bath home with 1971 SqFt
- Added Side Entry & Rough-in for Future 9' Basement Suite
- Additional 2' Width Garage
- Upgraded Splatter Texture Ceilings throughout Home
- 9ft Ceiling, Engineered Hardwood and Tile throughout Main Floor
- Maple Cabinet with 41" Upper Cabinets and Pot/Pan Drawers in Kitchen
- Huge Kitchen Quartz Counter with space for 6-8 Barstools
- Beautiful Frosted French Pantry Doors
- Kitchen Lighting includes Pot & Pendant Lights
- Great Room Designed with a Stone Surround Fireplace
- Paint grade Railings with Metal Spindles Lead you to the 2nd Floor
- Convenient 2nd Floor Laundry Room
- Bonus Room is Perfect for your Movie Nights
- Big Walk-in Closet in Master bedroom
- Get Refreshed in your 4 Pc Ensuite with Double Sinks
- 50 Us Gallon Hot Water Tank and Triple Pane with low E Argon Filled Windows
- Keyless entry for the OH Garage door
- Christmas Light Switch and Soffit Outlet
- Precast Cement Front Steps
- Located on Quiet Cul-de-Sac, Across from New K-9 School

Granville Showhome

5710 Greenough Landing, Edmonton AB

780.705.3765

granville@bedrockhomes.ca

Job # GRN-0-033889 Lot 92, Block 6, Plan 152 3647

Notes:

bedrockhomes.ca

VISIT US AT ANY OF OUR SHOWHOMES!

Monday - Thursday 3-8pm, Weekends & Holidays 12-5PM



The Kingston C

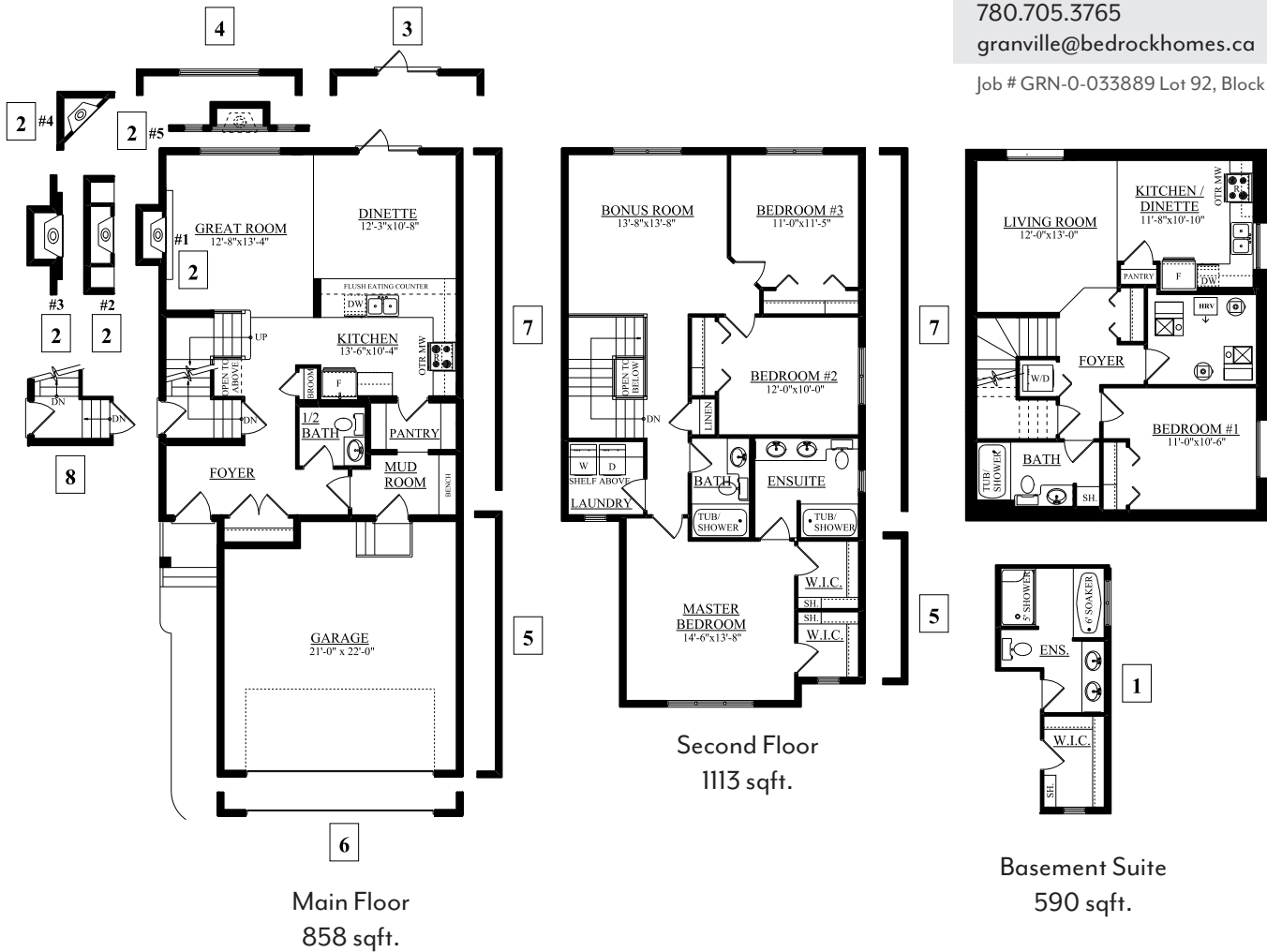
1971 SQ FT
8118 Gourlay Place NW



Granville Showhome

5710 Greenough Landing, Edmonton AB
780.705.3765
granville@bedrockhomes.ca

Job # GRN-0-033889 Lot 92, Block 6, Plan 152 3647



bedrockhomes.ca

VISIT US AT ANY OF OUR SHOWHOMES!
Monday - Thursday 3-8pm, Weekends & Holidays 12-5PM

