

Elwood (Adele)

1725 SQ FT

15145-14 St.



Wanting more in your home? The Adele offers all the space and comfort you are looking for, and with the premium finishing's, it can be yours to show off.

- Our Showhome, The Adele is a Beautiful 3 Bedroom, Bonus Room plus Den, 2 ½ Bath Home,
- Backing onto the Treed Park Space
- Airy Foyer with 17' Ceiling – Open to Second Floor
- 12"X24" Tile in Mudroom and Second Floor Bathrooms
- Engineered Hardwood Throughout the Main Floor
- L Shaped Kitchen With Large Island with Plenty Counter Space
- Quartz Countertops w/ undermount sink and Glass Backsplash
- Maple Kitchen Cabinets are Complete with Crown Moulding
- Kitchen has a Corner Pantry with Wire Shelves as well as a Pot and Pan Drawer for Extra Storage
- 4 Pc Stainless Whirlpool Appliance Package in Kitchen
- Fireplace in Great Room Will Provide Warmth and Ambiance
- Large Den has French Doors with an Opening in Wall Creating a Multipurpose Space
- Front Load Washer and Dryer are Located Conveniently in the Mudroom
- Modern Railing on Main Floor
- Master Bedroom has Large Walk-in Closet and Ensuite
- Ensuite Includes Walk-in Shower with Sliding Glass Door
- Upgraded Hunter Douglas Blinds Package, Custom Drapes and Matching Bedding
- 19'x22' Double Car Garage that includes 8 Decorative Glass Panels for Natural Light
- Garage Has Full Stone Face for Curb Appeal
- Garage has Additional Lighting and Plugs, Making this a Great Work Space, 7 Lights, 10 Pot Lights, 3-way Switches for the lights, 5 Additional Plugs
- Front and Rear Landscaping includes Sod, 1 Tree & 6 Shrubs
- 11'x10' Pressure Treated Rear Deck with BBQ Gas Line
- Triple Pane Windows for Energy Efficiency and Sound Reduction
- Superior Silence Wall Between Units Exceeds Standard Builder Practice
- Air Conditioning

Fraser Vista Showhome

15152-14 Street, Edmonton, AB.

780.756.2628

fraservistasales@bedrockhomes.ca

Job # FRV-0-033161 Lot 38, Block 119, Plan 132-5000

Notes:

bedrockhomes.ca

VISIT US AT ANY OF OUR SHOWHOMES!

Monday - Thursday 3-8pm, Weekends & Holidays 12-5PM



Elwood (Adele)

1725 SQ FT

15145-14 St.



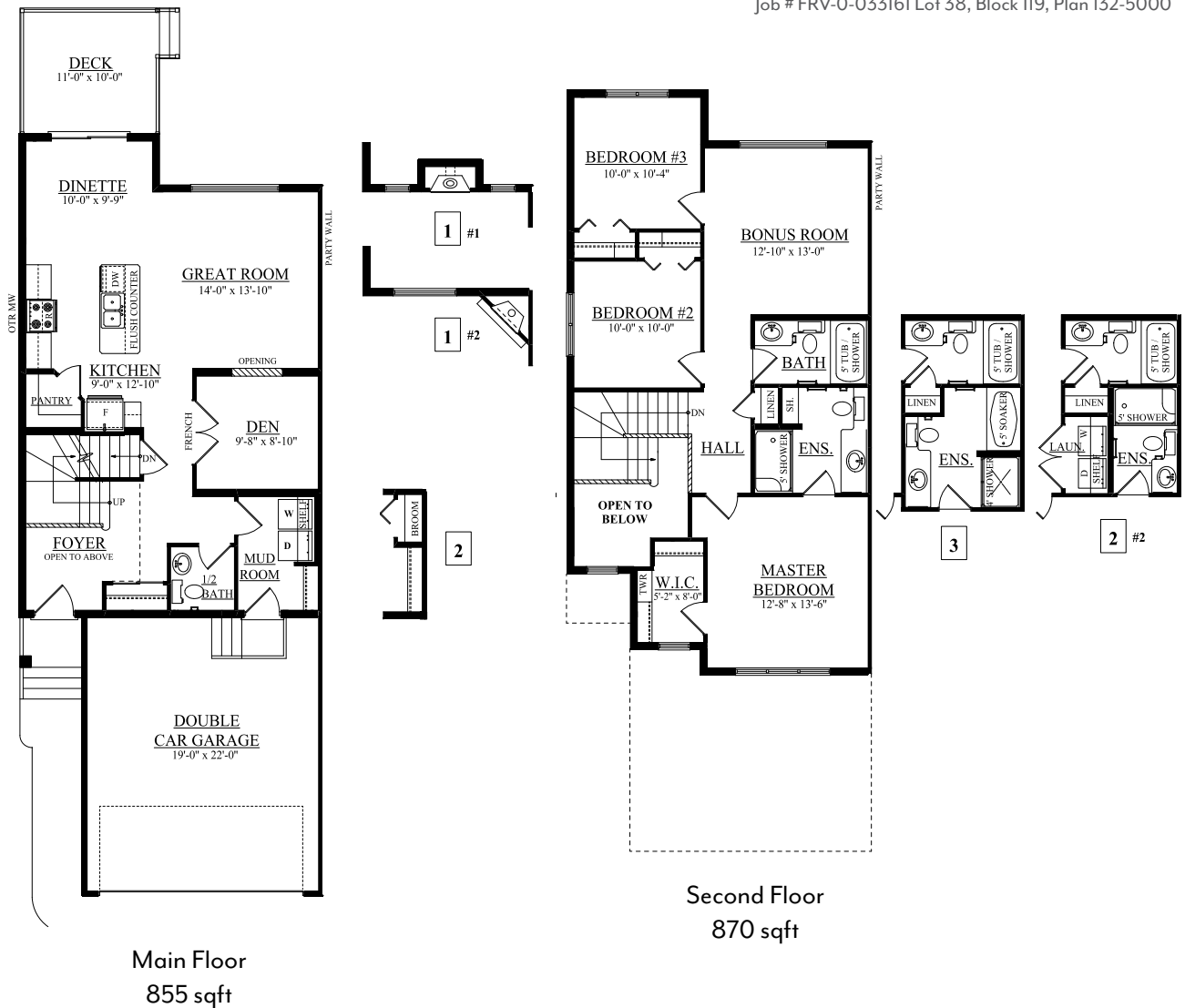
Fraser Vista Showhome

15152-14 Street, Edmonton, AB.

780.756.2628

fraservistasales@bedrockhomes.ca

Job # FRV-0-033161 Lot 38, Block 119, Plan 132-5000



bedrockhomes.ca

VISIT US AT ANY OF OUR SHOWHOMES!

Monday - Thursday 3-8pm, Weekends & Holidays 12-5PM

