



BEDROCK
HOMES

COPPER PHOENIX II

1730 SQ FT
50 Earl Close



EVERGREEN SHOWHOME

181 Emerald Drive, Red Deer
403.879.3071
evergreen@bedrockhomes.ca

Job # EVG 5219
Lot 62, Block 6, Plan TBA

DETAILS

- Beautiful new community located in the north east corner of Red Deer.
- Evergreen is full of reserved greenspace, walking trails that connect into the Timbers and Clearview, and play structures. Evergreen is calling your name. Close to grocery stores, restaurants, fuel stations, and the list goes on. This community is also seconds down the road from River Bend Golf Course and Discovery Canyon.
- Thought out main floor layout. With a large quartz island in the kitchen, functional corner pantry, and ceiling height cabinets. The dining room, and great room although open, still give the sense of two different spaces.
- Other features that stand out on the main floor include an electric fireplace, the spacious mudroom and the Brilliant smart home system.
- This home has stunning interior selections, navy blue cabinets, light grey quartz and light grey backsplash. What a lovely combination!
- Make your way upstairs to the convenient central bonus room. Relax, unwind, hang out.
- Primary bedroom is at the front of the home. With a large, spacious walk in closet of your dreams. Ensuite has quartz countertops and an undermounted sink.
- Secondary bedrooms are at the back of the home adding privacy between the primary suite.
- Home has a second floor laundry room which is a great feature for the whole family!

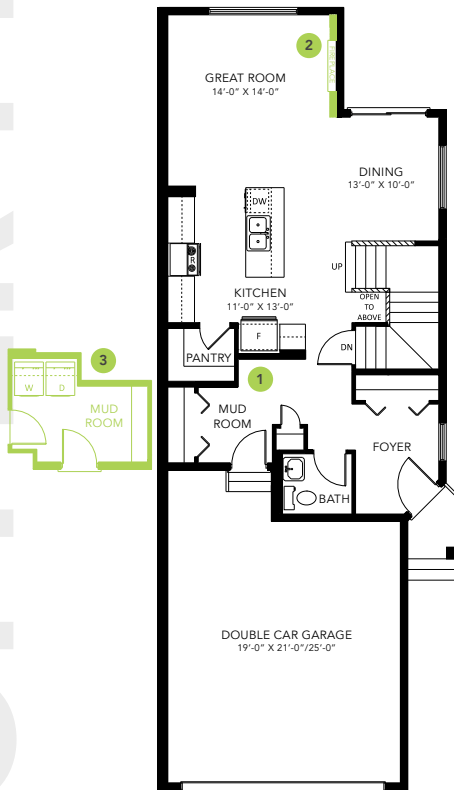
1730 SQ FT
50 Earl Close



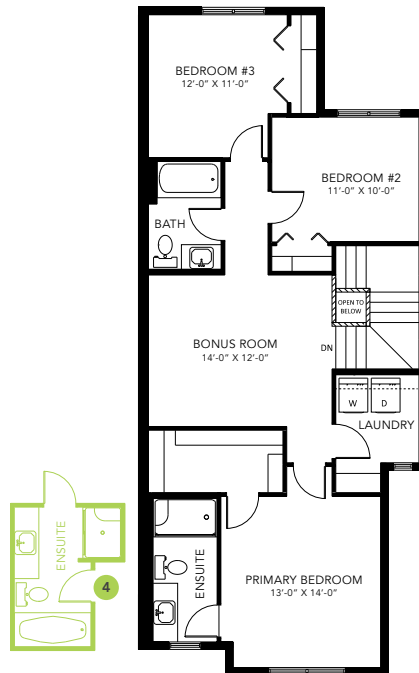
EVERGREEN SHOWHOME

181 Emerald Drive, Red Deer
403.879.3071
evergreen@bedrockhomes.ca

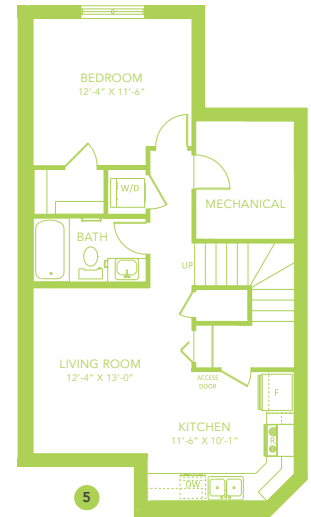
Job # EVG 5219
Lot 62, Block 6, Plan TBA



Main Floor
776 SQ FT



Second Floor
954 SQ FT



COPPER PHOENIX