



BEDROCK
HOMES

JULIA B

1713 SQ FT
68 Emmett Crescent



EVERGREEN SHOWHOME

181 Emerald Drive, Red Deer
403.879.3071
evergreen@bedrockhomes.ca

Job # EVG 5072
Lot 99, Block 6, Plan TBA

DETAILS

- Beautiful new community located in the north east corner of Red Deer.
- Evergreen is full of reserved greenspace, walking trails that connect into the Timbers and Clearview, and play structures. Evergreen is calling your name. Close to grocery stores, restaurants, fuel stations, and the list goes on. This community is also seconds down the road from River Bend Golf Course and Discovery Canyon.
- Main floor of the Julia is the definition of functional. Open concept creating great flow through out the home. Large quartz island, ceiling height cabinets, walk through pantry and mudroom that are right off the garage.
- On the main floor you will also find an included appliance package and an electric fireplace.
- This home is filled with stunning interior selections, light grey cabinets, light grey quartz, and white backsplash. These beautiful selections are carried through out the home. Light, airy, dreamy.
- Main floor railing makes the whole floor chic.
- On the second floor you will be met with a bonus room at the top of the stairs.
- Primary bedroom is at the front of the home with a large walk in closet, lovely ensuite with quartz counter tops and an undermounted sink and tiled shower.
- Secondary bedrooms are located at the back of the home adding privacy between the primary suite.
- Second floor laundry is also a great feature that is convenient for everyone!

BUILT TO LAST \ \ **BEDROCKHOMES.CA**

SPEC 2022 - Bedrock Homes Ltd. reserves the right to modify floorplans, renderings, elevations and features in a continuing effort to improve product quality. Floorplans, specifications & prices are subject to change without notice. Errors & omissions exempt.



BEDROCK
HOMES

JULIA B

1713 SQ FT
68 Emmett Crescent

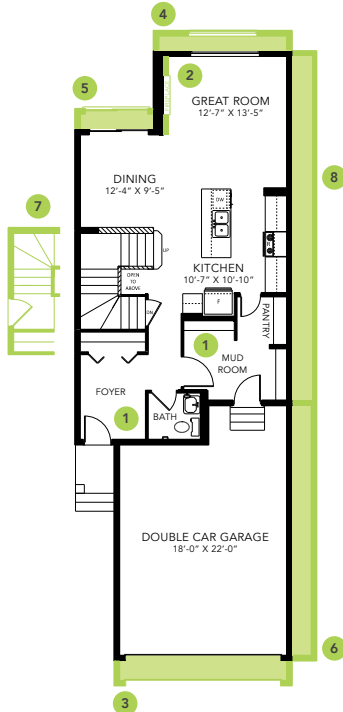


EVERGREEN SHOWHOME

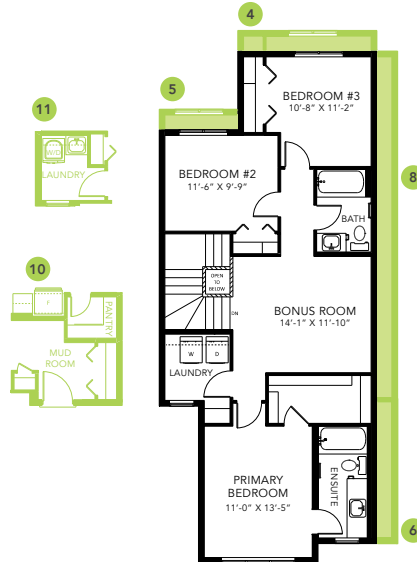
181 Emerald Drive, Red Deer
403.879.3071

evergreen@bedrockhomes.ca

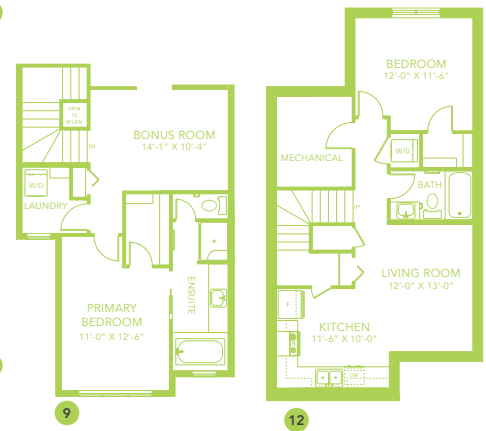
Job # EVG 5072
Lot 99, Block 6, Plan TBA



Main Floor
774 SQ FT



Second Floor
939 SQ FT



BUILT TO LAST \ BEDROCKHOMES.CA

SPEC 2022 - Bedrock Homes Ltd. reserves the right to modify floorplans, renderings, elevations and features in a continuing effort to improve product quality. Floorplans, specifications & prices are subject to change without notice. Errors & omissions exempt.