

1616 SQ FT
35 Earl Close, Red Deer



EVERGREEN SHOWHOME

181 Emerald Drive, Red Deer, Alberta
587.457.8624
evergreen@bedrockhomes.ca

Job # EVG-0-034779
Lot 71, Block 6, Plan 202-1808

DETAILS

- This comfortably sized home offers 3 Bedrooms, 2.5 Bathrooms, second floor laundry, office space, spacious kitchen and a double attached garage at an affordable price point
- Included Brilliant Smart Home on the main floor allows you to control your dimmer lights, front door lock, Ecobee thermostat and garage door with the built in Amazon Alexa, or on your smart phone when you are on the go
- Set scenes for lights, music and door locks for different activities throughout the day, set climate habits your daily work schedule to help with utility costs, or set vacation timers to keep lights on while you are away, all from your phone on the Brilliant App
- Large windows flood this home with bright natural lighting
- Open concept main floor with 9' ceilings is bright and modern
- Designer kitchen boasts quartz countertops, ceiling height cabinets, undermounted sink and luxury vinyl plank flooring in a modern grey color palette
- Included stainless steel appliances, huge walk-in pantry, and spacious island with flush eating bar make the kitchen as functional as it is stylish
- Upgraded black lever handles throughout and paint grade railing on the main floor add to the chic style of the home
- Relax in the great room with family after dinner in front of the warm and cozy linear electric fireplace
- Plenty of wall space to place a large corner desk directly under a bright window for natural sunlight makes the second floor flex area the perfect home office space or homework zone
- Convenient second floor laundry and a large linen closet is ultra convenient for today's busy lifestyle
- Quartz cabinets, undermounted sinks and modern grey cabinets are carried throughout the home, in the main bathroom and ensuite
- Luxurious master suite features a private ensuite bathroom with stand up shower and plenty of counterspace, as well as a massive walk-in closet
- Rich, dark exterior colors give this home a timeless curb appeal
- Located on a quiet close with lane access in the beautiful community of Evergreen, playgrounds, walking trails, water features and green spaces are just steps from the front door
- Double attached garage leaves space for parking inside while also storing lawn care equipment and recreational items
- HRV system, triple pane window and high efficiency furnace ensure your home operates as efficiently as possible
- Located in close proximity to Clearview Market Square and Timberlands Market means shopping, dining, healthcare and schools are just seconds away

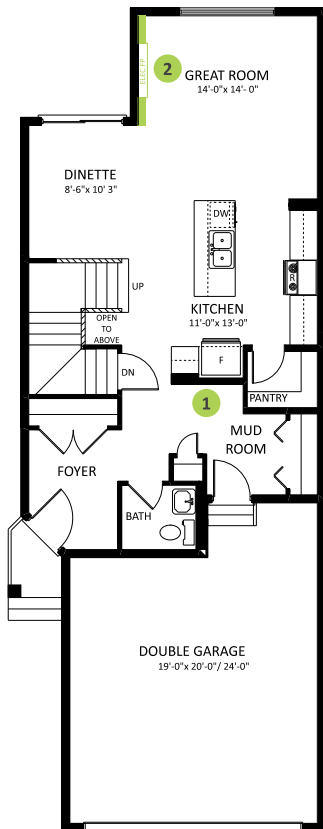
1616 SQ FT
35 Earl Close, Red Deer



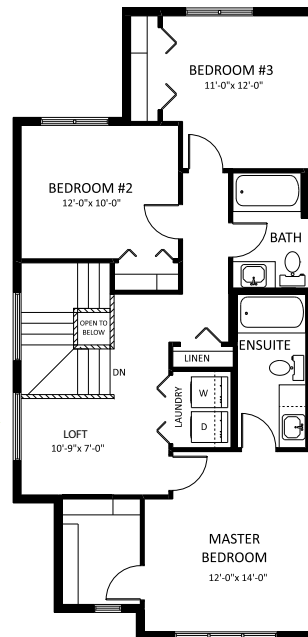
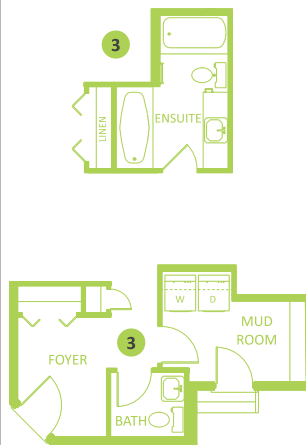
EVERGREEN SHOWHOME

181 Emerald Drive, Red Deer, Alberta
587.457.8624
evergreen@bedrockhomes.ca

Job # EVG-0-034779
Lot 71, Block 6, Plan 202-1808



Main Floor
776 SQ FT



Second Floor
840 SQ FT

