



## EVERGREEN SHOWHOME

24 Ellington Crescent, Red Deer  
587.457.8624  
evergreen@bedrockhomes.ca

Job # EVG-0-034392  
Lot 46, Block 2, Plan 182-2395

## DETAILS

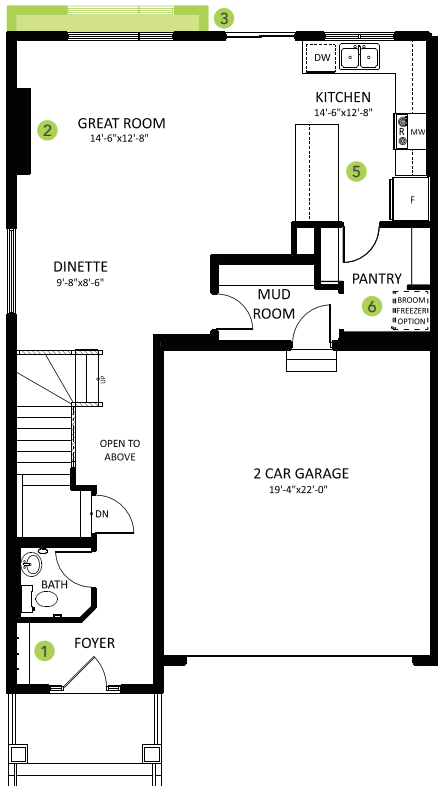
- This spacious home has 3 bedrooms and 2.5 bathrooms, as well as an unfinished basement so that you can finish and utilize the space in a way that suits your family the best.
- The Heritage Streetscape Elevation gives this home a timeless classic curb appeal.
- 9' ceilings on main floor, combined with splatter texture ceilings and large windows give the entertaining area of this home a boundless and open feel.
- The centrally located grand staircase that is open to above is highlighted by a beautiful and elegant oak and glass railing.
- This designer kitchen almost has too many features to list, including upgraded cabinets, durable vinyl plank flooring, frosted glass pantry door, additional subway pattern backsplash, a large island with eating bar, and beautiful quartz countertops.
- As if that isn't enough, we also include a five piece 2020 Samsung appliance package.
- Eye catching faux ceiling beams and perimeter bulkhead draw the eye to this incredible kitchen.
- We have also included a walk through butler pantry from the garage entrance, with an outlet for an added freezer. This means your kitchen isn't just exquisitely stylish, it is also practical, convenient and full of storage space.
- It's the little things that make life more convenient, like our included soffit plug and switch for Christmas lights and USB charging ports throughout the home.
- The linear electric fireplace located in the main floor great room creates a cozy ambiance as you socialize with friends and family, or unwind after a long day.
- Media cable conduits for wall mounted TV's keep cables and wires hidden in the master bedroom, bonus room and great room.
- The gorgeous master suite is located at the rear of the home for added privacy from the secondary bedrooms.
- The 4 piece ensuite bathroom features a stand alone soaker tub, fully tiled shower with 10mm glass barn door and dual vanities to make getting ready in the morning a breeze.
- Window coverings are just one more thing that you don't have to worry about, because we have already included 2" Hunter Douglas Faux Wood Blinds throughout the entire home.
- The expansive 16' x 12' rear deck with upgraded aluminum railing is the perfect place to BBQ, entertain or just relax with your feet up in the summer.
- The rear lane allows for easy access to the back yard.
- The double attached garage includes a floor drain with sump pail and 8' overhead door to make projects easy to tackle and clean up from afterwards.
- Triple Pane, Low E Argon filled Energy Star rated windows help to keep your home warmer in the winter, and cooler in the summer.
- The heat recovery ventilator that continuously circulates fresh, clean air through your home, and a high efficiency furnace and hot water tank are just a few more features that we include in our all of our homes, for your piece of mind and convenience.



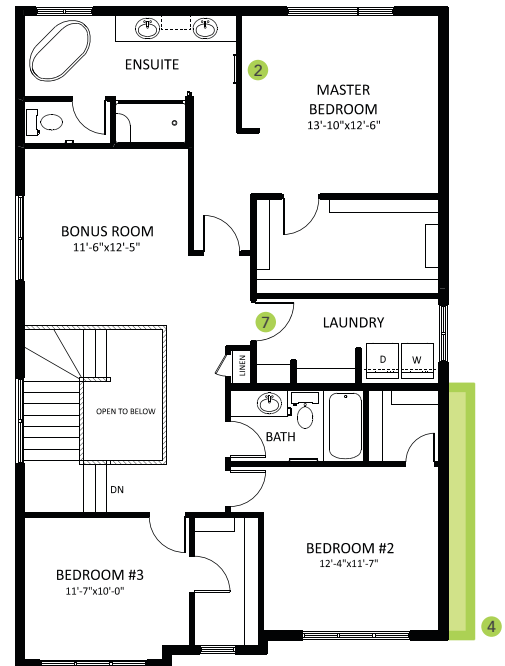
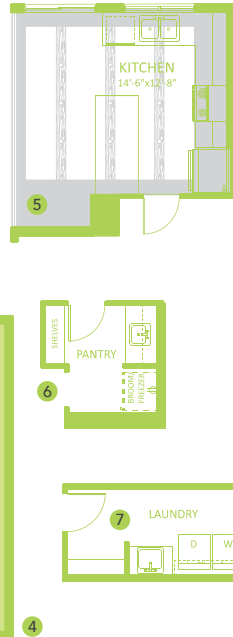
## EVERGREEN SHOWHOME

24 Ellington Crescent, Red Deer  
587.457.8624  
evergreen@bedrockhomes.ca

Job # EVG-0-034392  
Lot 46, Block 2, Plan 182-2395



**Main Floor**  
916 SQ FT



**Second Floor**  
1224 SQ FT