

Peyton H
2140 SQ FT
24 Ellington Crescent



- 3 beds. 2.5 baths Showhome
- Open concept living/dining
- Stunning vinyl plank flooring
- Butler's pantry with stand-up freezer and sink
- Quartz countertops with waterfall edge
- Modern stainless steel appliances with wi-fi fridge and gas stove
- Glass railing going upstairs adding openness to space
- Sleek grey stone around living room fireplac
- Large bedrooms with walk-in closets
- Bonus room upstairs
- Laundry room sink plus overhead cabinets and clothes hanger space
- Lots of basement potential
- Mud room open closet coming in from garage
- Master bedroom oasis with fireplace and free-standing tub and glass-tiled shower
- Triple pane Low E argon filled Energy Star Windows
- Heat recovery ventilator, high efficiency furnace and hot water tank
- Lutron dimming light switches, kitchen beam lighting, and Nu-on air filtration
- New Nest Thermostat technology
- Double car garage with heater for the winter

Evergreen Showhome
24 Ellington Cres, Red Deer
587.457.8624
evergreen@bedrockhomes.ca

Job # EVG-0-034385 Lot 17, Block 2, Plan TBD

Notes:

bedrockhomes.ca

VISIT US AT ANY OF OUR SHOWHOMES!
Monday - Thursday 3-8pm, Weekends & Holidays 12-5PM

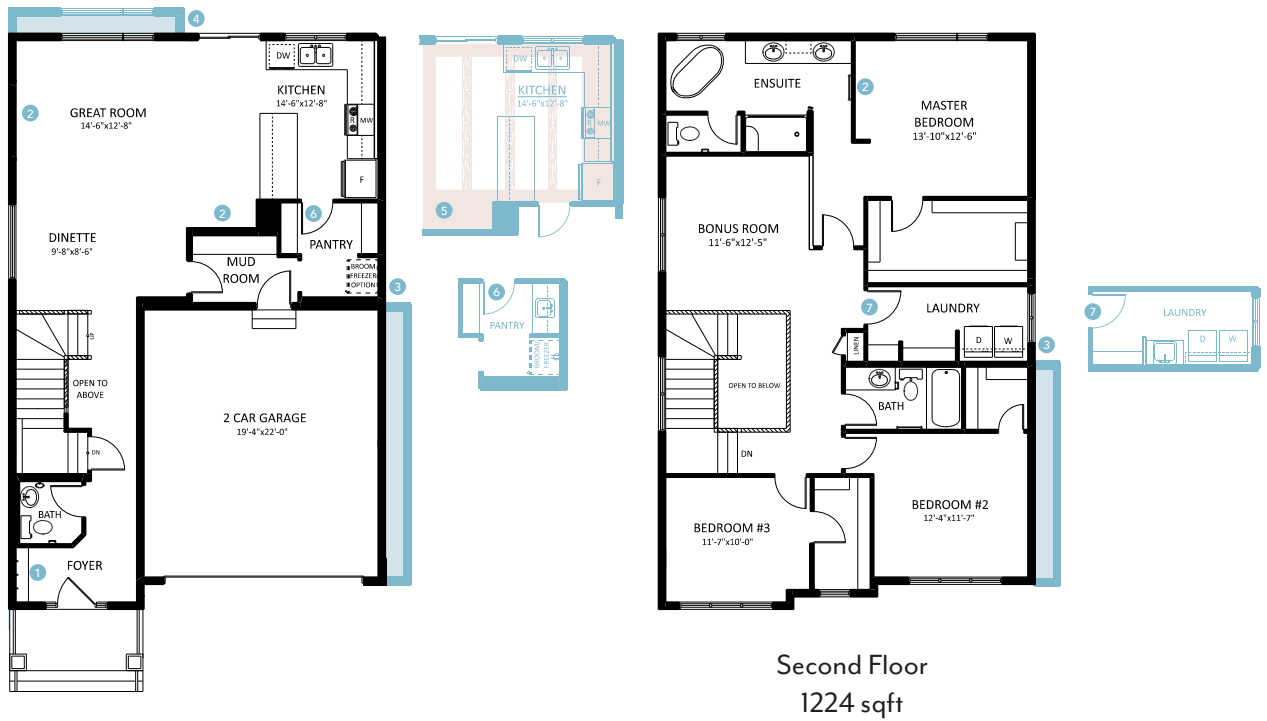


Peyton H
 2140 SQ FT
 24 Ellington Crescent



Evergreen Showhome
 24 ELLINGTON CRES, Edmonton
 587.457.8624
 evergreen@bedrockhomes.ca

Job # EVG-0-034385 Lot 17, Block 2, Plan TBD



Main Floor
 916 sqft

Second Floor
 1224 sqft

bedrockhomes.ca

VISIT US AT ANY OF OUR SHOWHOMES!
 Monday - Thursday 3-8pm, Weekends & Holidays 12-5PM

