



BEDROCK
HOMES

RYLEE K

1989 SQ FT
7132-182 Ave



CRYSTALLINA SHOWHOME

7007 - 181 Avenue NW, Edmonton
780-218-1108
gedwards@bedrockhomes.ca

Job # CSA 4945
Lot 112, Block 1, Plan 212-2358

DETAILS

- Double front attached garage home with 9' ceilings on the main floor, 3 bedrooms, bonus room and 2.5 baths.
- Open floorplan in Great Room, Dining and Kitchen. Features elegant quartz throughout the home.
- Durable and stylish luxury vinyl plank flooring on the main floor, bathrooms and laundry room. Advanced wear and stain protection carpet with 35oz. Weight and 8lb underlay on the second floor.
- Modern, contemporary low maintenance kitchen featuring 41" upper cabinets to ceiling.
- Complete 6 piece appliance package. Included Stainless Steel Samsung Kitchen appliances and white front load washer and dryer.
- Upgraded spindle railing on the main floor offers optimal lighting and a spacious feel throughout.
- Triple pane Low E Argon gas filled Energy Star rated windows contributing to increased energy efficiency and outside noise reduction.
- Electric fire and ice linear fireplace in great room with timer & color control.
- Modern home technology package includes Brilliant Smart Home system (Google assistant or Alexa built in), Ecobee thermostat, Ring video doorbell & Weiser Halo Wi-Fi Smart keyless lock with touch screen.
- Weather resistant precast concrete exterior steps that require no maintenance, and exterior walls and ceilings are vapour sealed.

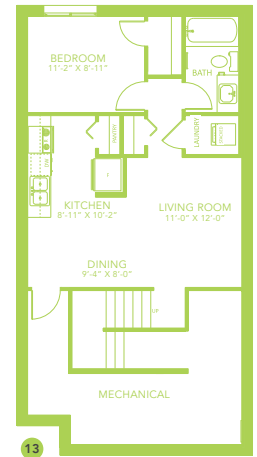
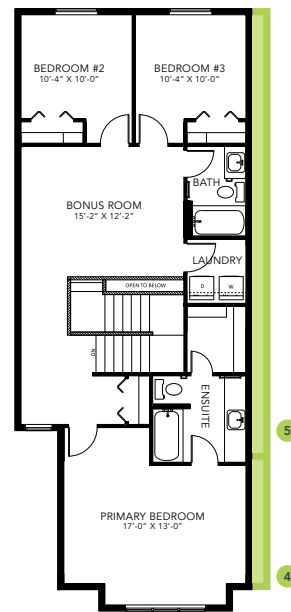
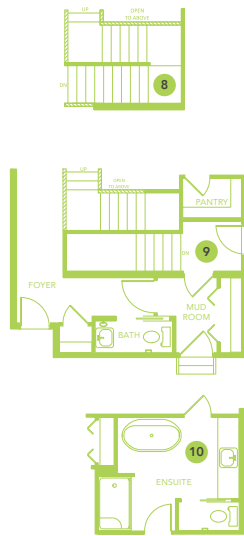
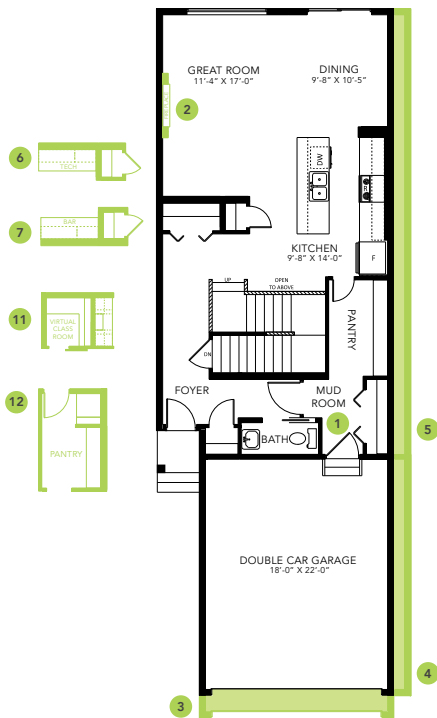
RYLEE K



CRYSTALLINA SHOWHOME

7007 - 181 Avenue NW, Edmonton
780-218-1108
gedwards@bedrockhomes.ca

Job # CSA 4945
Lot 112, Block 1, Plan 212-2358



RYLEE K