



CREEKWOOD SHOWHOME

7363 Chivers Crescent SW, Edmonton
780.440.4016
creekwood@bedrockhomes.ca

Job # CRK-0-034430
Lot 50A, Block 34, Plan 192 2839

DETAILS

- Linear electric fireplace
- 8' ceilings on the main floor
- Vanilla 36" cabinets in kitchen, pot and pan drawers
- Quartz countertops in kitchen and upstairs bathrooms with undermount sinks (Hanstone Uptown Grey)
- 6 piece stainless steel Samsung appliances with white high efficiency front load washer/dryer
- Gem cabinets shaker thermofoil (Vanilla)
- Luxury vinyl plank flooring throughout main floor and wet areas (Divine Quest Miss Sunshine)
- Stain-proof carpeting upstairs (Mohawk True Harmony Silverado)
- Triple pane low E Argon filled Energy Star rated windows
- Heat recovery ventilator, high efficiency gas furnace and 50 gallon hot water tank
- LED pot lights throughout
- 4 landscaped, naturalized wetlands and 9.8 km of interconnected walkways and trail systems, plus playgrounds and a BMX track only steps away
- Currents of Windermere, South Edmonton Common and the new Premium Outlet Collection within a short 5-15 minute drive
- Chappelle Crossing commercial plazas nearby
- Creekwood Chappelle address plaque



BEDROCK
HOMES

SOFIA ASHBURY

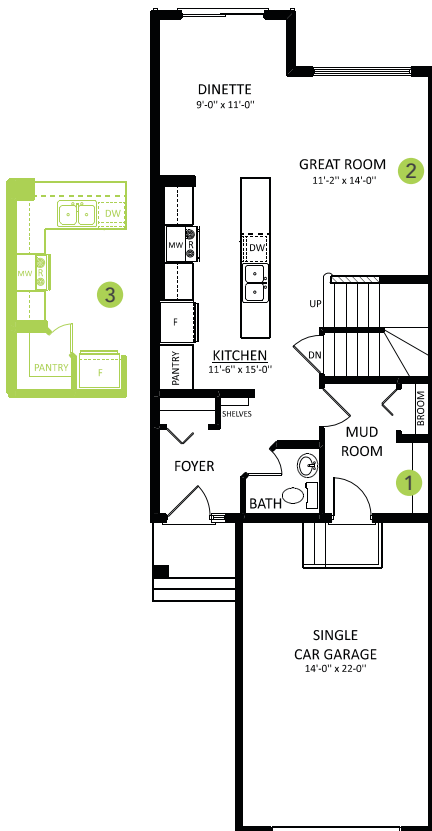
1434 SQ FT
7372 Chivers Crescent SW



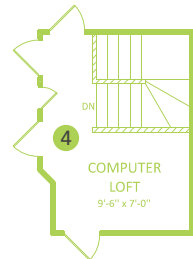
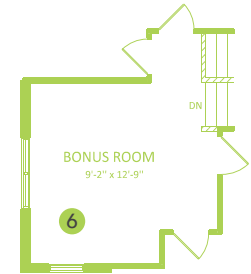
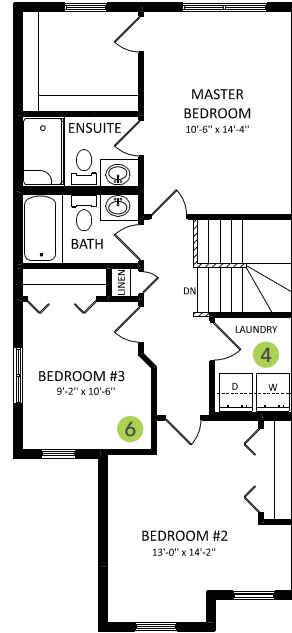
CREEKWOOD SHOWHOME

7363 Chivers Crescent SW, Edmonton
780.440.4016
creekwood@bedrockhomes.ca

Job # CRK-0-034430
Lot 50A, Block 34, Plan 192 2839



Main Floor
680 SQ FT



Second Floor
754 SQ FT