

# Amelia P

4119 5 Avenue SW

1708 SQ FT



- 3 Bedroom, 2.5 bath home with a bonus room
- 9' Ceilings on Main Floor
- Samsung Appliance Package Included
- Upgraded kitchen backsplash
- Linear Electric Fireplace
- Quartz countertops in the kitchen and second floor bathrooms
- Energy Star rated triple pane windows, with Low E argon filled glass
- Second floor laundry
- Smart thermostat with color screen, Wi-fi capabilities
- Heating and ventilation system (HRV)
- Luxury vinyl plankl floors on the main floor
- Bonus room
- Railing with metal spindles on the main floor

## Hills of Charlesworth Showhome

716 Charlesworth Way SW, Edmonton

587.521.5871

[hillssofcharlesworth@bedrockhomes.ca](mailto:hillssofcharlesworth@bedrockhomes.ca)

Job # CHH-0-034284 Lot 98, Block 1, Plan 172-3655

Notes:

---

---

---

---

---

---

[bedrockhomes.ca](http://bedrockhomes.ca)

VISIT US AT ANY OF OUR SHOWHOMES!

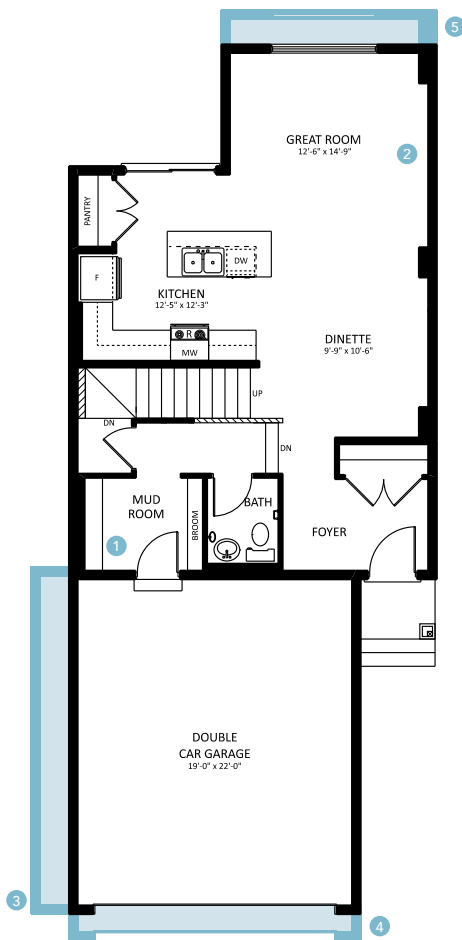
Monday - Thursday 3-8pm, Weekends & Holidays 12-5PM



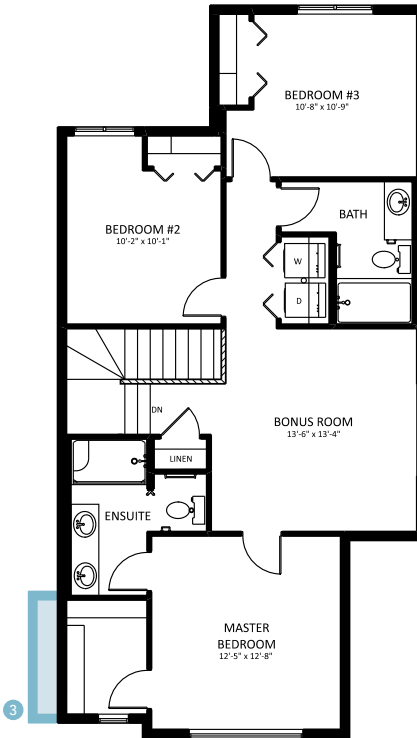
# Amelia P

4119 5 Avenue SW

1708 SQ FT



Main Floor  
760 sqft



Second Floor  
948 sqft

**Hills of Charlesworth Showhome**  
716 Charlesworth Way SW, Edmonton  
587.521.5871  
hillssofcharlesworth@bedrockhomes.ca

Job # CHH-0-034284 Lot 98, Block 1, Plan 172-3655

[bedrockhomes.ca](http://bedrockhomes.ca)

VISIT US AT ANY OF OUR SHOWHOMES!  
Monday - Thursday 3-8pm, Weekends & Holidays 12-5PM

