

# Amelia H

4103 5 Ave  
1708 SQ FT



- 3 Bedroom, 2.5 bath home with a bonus room
- 9' Ceilings on Main Floor
- Samsung Appliance Package Included
- Upgraded kitchen backsplash
- Linear Electric Fireplace
- Quartz countertops in the kitchen and second floor bathrooms
- Energy Star rated triple pane windows, with Low E argon filled glass
- Second floor laundry
- Smart thermostat with color screen, Wi-fi capabilities
- Heating and ventilation system (HRV)
- Luxury vinyl plankl floors on the main floor
- Bonus room

## Hills of Charlesworth Showhome

715 Charlesworth Way SW, Edmonton  
587.521.5870  
hillsofcharlesworth@bedrockhomes.ca

Job # CHH-0-034282 Lot 94, Block 1, Plan 172-3655

Notes:

---

---

---

---

---

---

---

**bedrockhomes.ca**

VISIT US AT ANY OF OUR SHOWHOMES!  
Monday - Thursday 3-8pm, Weekends & Holidays 12-5PM



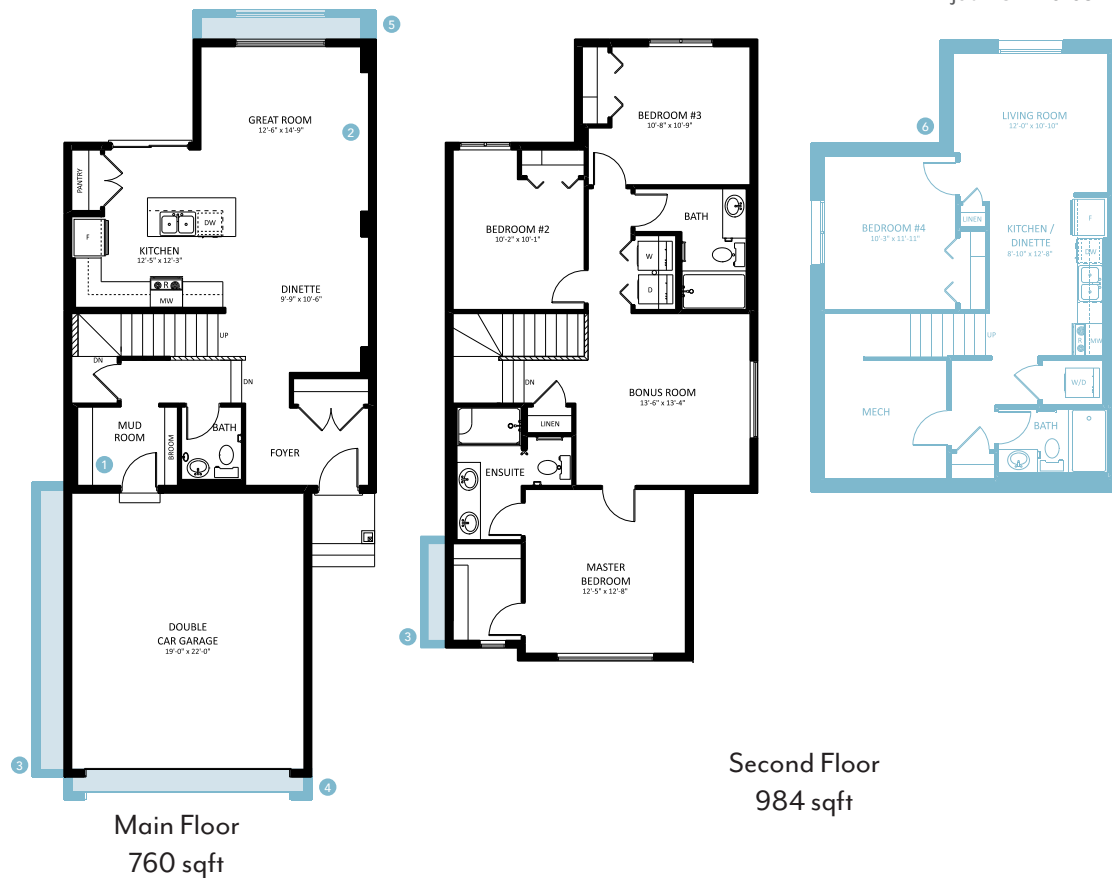
# Amelia H

4103 5 Ave  
1708 SQ FT



**Hills of Charlesworth Showhome**  
715 Charlesworth Way SW, Edmonton  
587.521.5870  
hillssofcharlesworth@bedrockhomes.ca

Job # CHH-0-034282 Lot 94, Block 1, Plan 172-3655



**bedrockhomes.ca**

VISIT US AT ANY OF OUR SHOWHOMES!  
Monday - Thursday 3-8pm, Weekends & Holidays 12-5PM

