

# The Summit C

1418 SQ FT

3611-8 Ave. SW



*This fully loaded Townhome floor plan has an upgraded modern package. This home features a spacious main floor with a convenient mud room and laundry. Open concept kitchen which opens up into the spacious great room. Kitchen features white quartz countertops and subway tile style backsplash. The Kitchen has modern Thermofoil Metro White Flat Slab Style door designed cabinets, and 36" upper cabinets installed to ceiling. Home also includes pot lights and pendant lights on the main floor, stainless steel appliance. Other features include: front load washer and dryer, front and back landscape, rear deck and Hunter Douglas Blinds. There are two large master bedrooms, which both include ensuites and their own spacious walk in closets.*

- Stainless steel appliances
- Front load washer and dryer
- Laminate flooring throughout main floor
- Upgraded modern package
- Quartz countertop in the kitchen
- Subway style tile backsplash
- Paint grade railing with straight metal spindles
- Pot light and pendent lighting on the main floor
- Upgraded finishing's and faucets
- 2 Master bedrooms with large walk in closet and ensuites
- Loft on the second floor
- Front and back landscape
- Rear deck
- Hunter Douglas Blinds
- Triple pane, Low E, Argon filled windows
- North facing Front on a 259.48Sq Meter lot

## The Hills at Charlesworth Showhome

714 Charlesworth Way SW, Edmonton

587.521.5869

[thehillsatcharlesworthsales@bedrockhomes.ca](mailto:thehillsatcharlesworthsales@bedrockhomes.ca)

Job # CHH-0-033939 Lot 13, Block 6, Plan 152 5645

Notes:

---

---

---

---

---

---

**bedrockhomes.ca**

VISIT US AT ANY OF OUR SHOWHOMES!

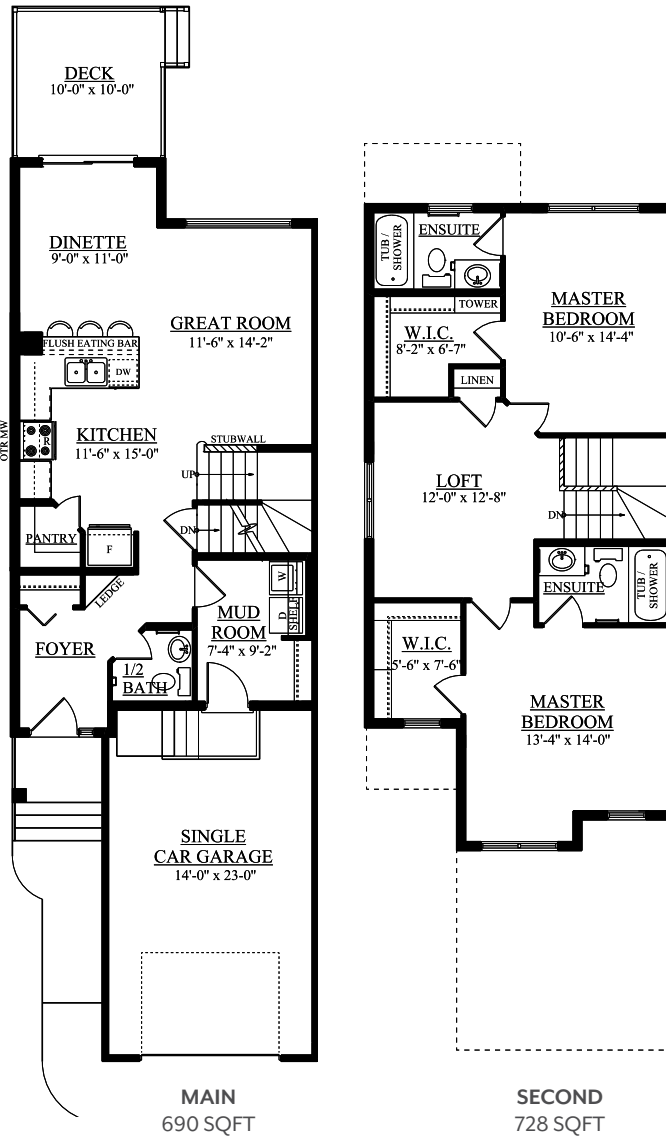
Monday - Thursday 3-8pm, Weekends & Holidays 12-5PM



# The Summit C

1418 SQ FT

3611-8 Ave. SW



## The Hills at Charlesworth Showhome

714 Charlesworth Way SW, Edmonton

587.521.5869

thehillsatcharlesworthsales@bedrockhomes.ca

Job # CHH-0-033939 Lot 13, Block 6, Plan 152 5645

[bedrockhomes.ca](http://bedrockhomes.ca)

VISIT US AT ANY OF OUR SHOWHOMES!

Monday - Thursday 3-8pm, Weekends & Holidays 12-5PM

