



GREYSON N

1378 SQ FT
603 - 41 STREET SW



THE HILLS AT CHARLESWORTH SHOWHOME

714 Charlesworth Way SW, Edmonton
587.521.5869
hillsatcharlesworth@bedrockhomes.ca

Job # CHH-0-033767
Lot 43, Block 2, Plan 172-0664

DETAILS

- 3 bedrooms, 2.5 bath with second floor laundry
- 9' ceiling on main floor with luxury vinyl flooring on main floor and second floor bathrooms
- Quartz countertops in kitchen and second floor bathrooms with undermount sinks
- LED pot lights in kitchen and main and second floor hallways
- Hills address plaque
- Kitchen has Samsung stainless steel appliance package with white front load washer and dryer
- Linear electric fireplace includes backing, electrical, and electrical and recessed HDMI box for easy mounting of TV
- Triple pane low E argon filled Energy Star rated windows
- Heat recovery ventilator, high efficiency furnace and hot water tank
- USB charging ports

BUILT TO LAST \ \ **BEDROCKHOMES.CA**

SPEC 2020 - Bedrock Homes Ltd. reserves the right to modify floorplans, renderings, elevations and features in a continuing effort to improve product quality. Floorplans, specifications & prices are subject to change without notice. Errors & omissions exempt.

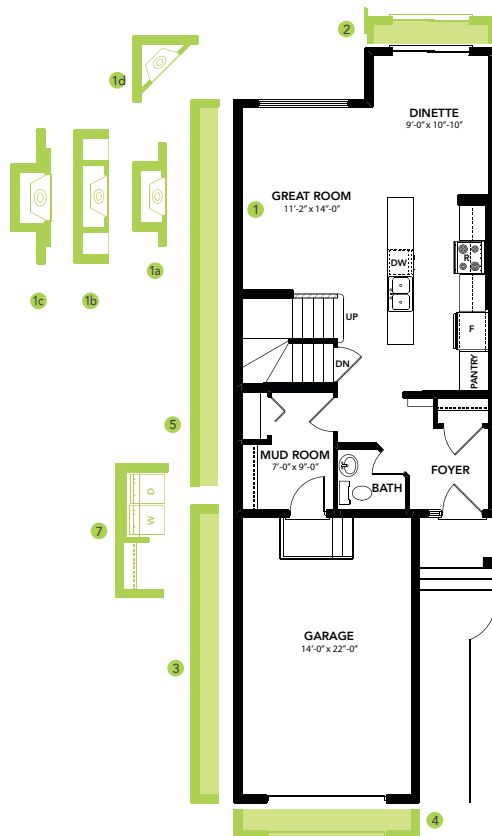


THE HILLS AT CHARLESWORTH SHOWHOME

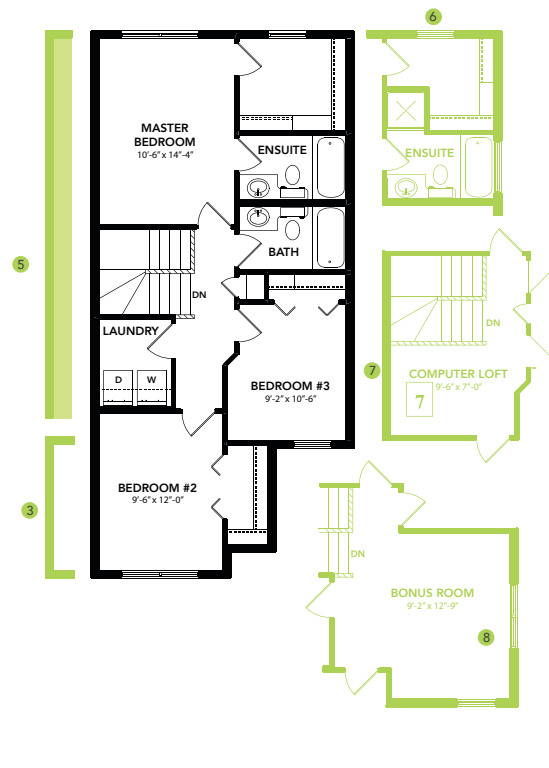
714 Charlesworth Way SW, Edmonton
587.521.5869

hillsatcharlesworth@bedrockhomes.ca

Job # CHH-0-033767
Lot 43, Block 2, Plan 172-0664



Main Floor
676 SQ FT



Second Floor
702 SQ FT