

Oakley (Oliver)

1574 SQ FT

611 - 41 Street SW



- East facing backyard
- 3 bedrooms, 2.5 bath with loft on the second floor
- Double car garage 18'x 22'
- Open concept main floor with walk through pantry
- Laminate and tile flooring on the main floor
- Modern cabinets with riser in the kitchen
- Pot and Pan drawer for a more organized kitchen
- Quartz counter top all throughout the kitchen
- LED light in the entire the house including kitchen pot & pendent light
- Handrail with metal spindles on the main floor
- Laundry room conveniently located on the 2nd floor
- Full yard landscaping
- Hunter Douglas blinds
- Stainless steel kitchen appliances and white front load washer and dryer
- Pressure treated deck with gas line for BBQ
- HRV, triple pane windows with low E, & argon
- Exposed aggregate on the front step

The Hills at Charlesworth Showhome

714 Charlesworth Way SW, Edmonton

587.521.5869

thehillsatcharlesworthsales@bedrockhomes.ca

Job # CHH-0-033764 Lot 40, Block 2, Plan 172 0664

Notes:

bedrockhomes.ca

VISIT US AT ANY OF OUR SHOWHOMES!

Monday - Thursday 3-8pm, Weekends & Holidays 12-5PM



Oakley (Oliver)

1574 SQ FT

611 - 41 Street SW



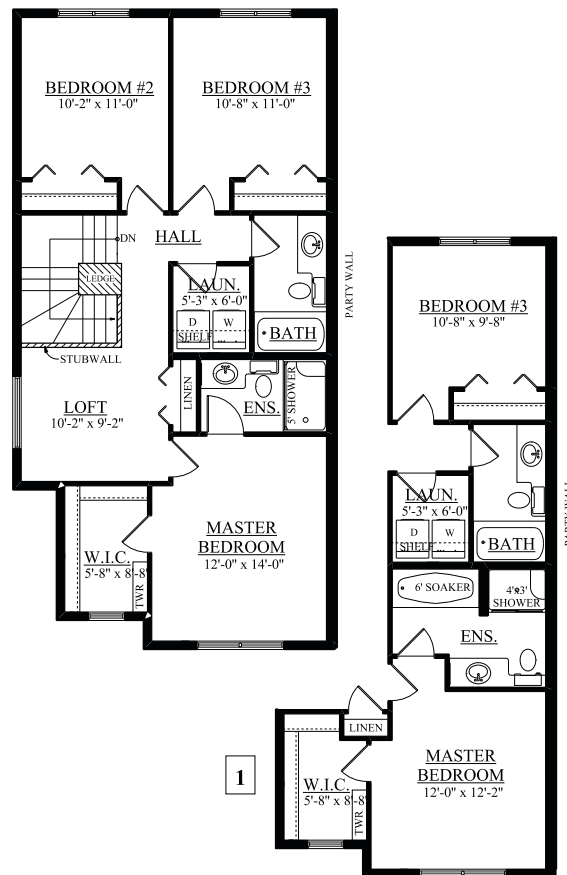
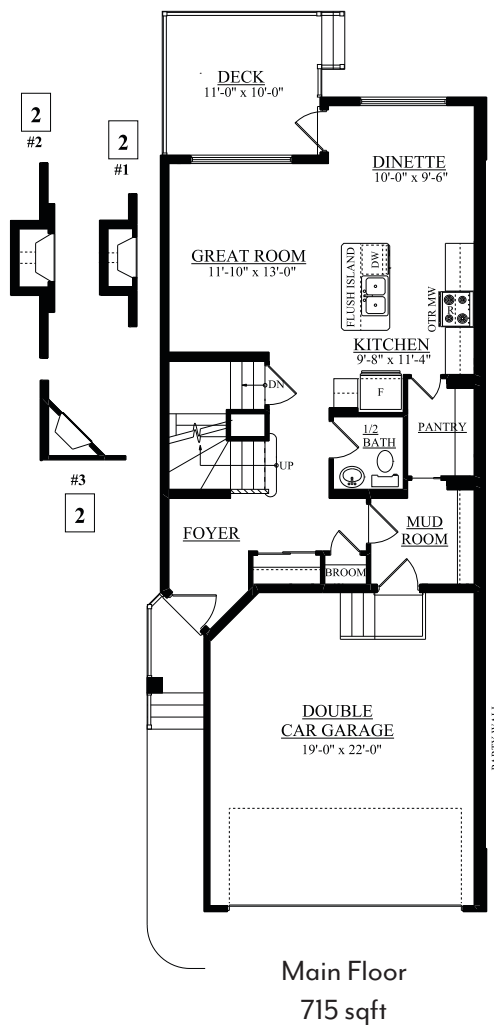
The Hills at Charlesworth Showhome

714 Charlesworth Way SW, Edmonton

587.521.5869

thehillsatcharlesworthsales@bedrockhomes.ca

Job # CHH-0-033764 Lot 40, Block 2, Plan 172 0664



bedrockhomes.ca

VISIT US AT ANY OF OUR SHOWHOMES!

Monday - Thursday 3-8pm, Weekends & Holidays 12-5PM

