

# Summit N

615 41 Street SW

1423 SQ FT



- 3 Bedroom, 2.5 bath
- Front attached single car garage
- Samsung Appliance Package Included
- Quartz countertops in the kitchen and second floor bathrooms
- Upgraded kitchen backsplash
- Upgraded paint grade railing with metal spindles on the first floor
- Energy Star rated triple pane windows, with Low E argon filled glass
- Smart thermostat with color screen, Wi-fi capabilities
- Heating and ventilation system (HRV)
- Large master bedroom includes a walk in closet and ensuite

## Hills of Charlesworth Showhome

716 Charlesworth Way SW, Edmonton

587.521.5871

[hillofcharlesworth@bedrockhomes.ca](mailto:hillofcharlesworth@bedrockhomes.ca)

Job # CHH-0-033762 Lot 38, Block 2, Plan 172-0664

Notes:

---

---

---

---

---

---

---

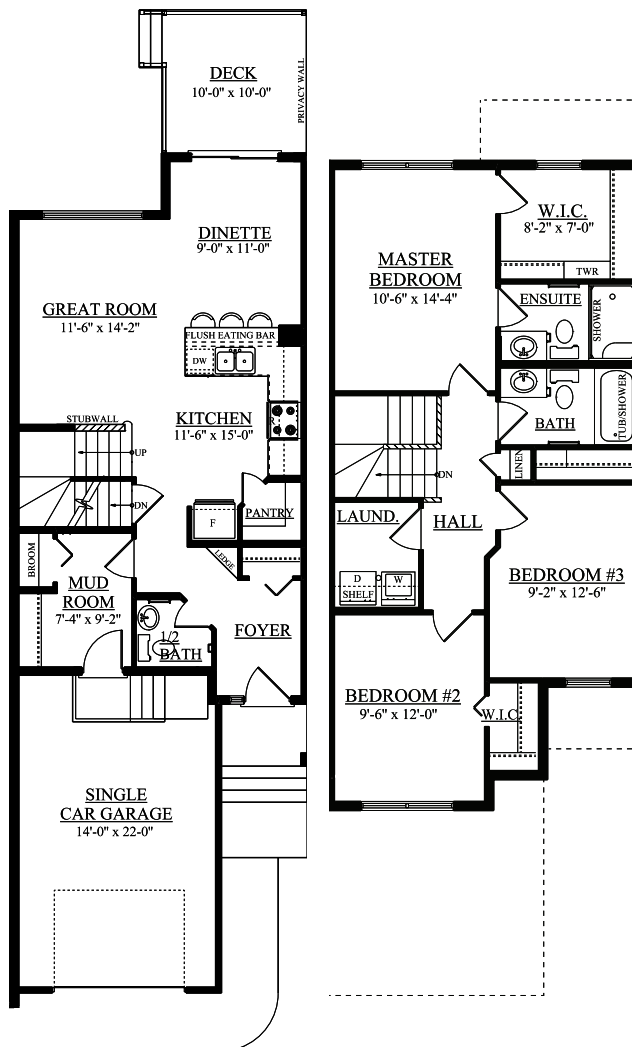
[bedrockhomes.ca](http://bedrockhomes.ca)

VISIT US AT ANY OF OUR SHOWHOMES!

Monday - Thursday 3-8pm, Weekends & Holidays 12-5PM



**Summit N**  
 615 41 Street SW  
 1423 SQ FT



**Hills of Charlesworth Showhome**  
 716 Charlesworth Way SW, Edmonton  
 587.521.5871  
[hillssofarlesworth@bedrockhomes.ca](mailto:hillssofarlesworth@bedrockhomes.ca)

Job # CHH-0-033762 Lot 38, Block 2, Plan 172-0664

Main Floor  
 690 sqft

Second Floor  
 733 sqft

[bedrockhomes.ca](http://bedrockhomes.ca)

VISIT US AT ANY OF OUR SHOWHOMES!  
 Monday - Thursday 3-8pm, Weekends & Holidays 12-5PM

