

Flora P at 420 29 St SW

| BED | BATH | SQ FT | HOME STYLE |
|-----|------|-------|------------|
| 4 | 2.5 | 1598 | LANED HOME |



QUICK POSSESSION

COMMUNITY



CONTACT

Craig Watson
587.805.2131

Showhome Coming Soon

BLOCK: 10

STAGE: 1

LOT: 15

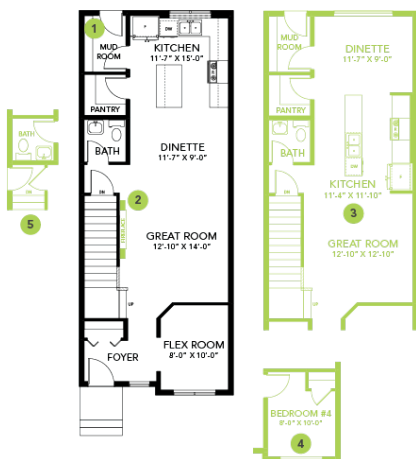
JOB: ALC-0-035600

Model Features

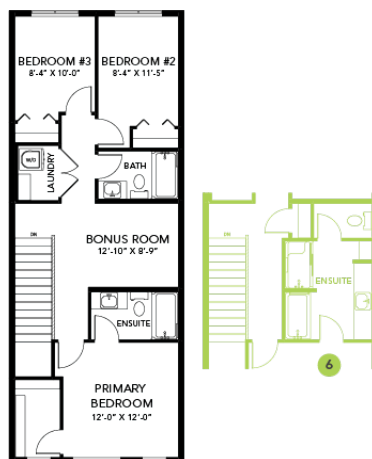
- This Bedrock Homes include a modern smart home technology system (Smart Home Hub), Ecobee thermostat, video doorbell & Weiser Halo Wi-Fi Smart keyless lock with touch screen.
- Home features a main floor fourth bedroom.
- Open kitchen to the rear home the home with a large window for natural lighting, huge Island with an eating bar and a large walk in pantry.
- Spindle railing with straight metal spindles on the stairs leading up.
- This home comes complete with a stainless-steel appliance package that includes A 32 cu. Ft. French door fridge with bottom pull out freezer and ice machine, a 5 burner range, an over the range microwave/ hood fan combination and a built-in dishwasher.
- 50" Linear LED electric fireplace with additional framing to allow for TV mounting above.
- Energy efficient features include double pane, Low-E, argon gas filled, Energy Star rated windows, heat recovery ventilator, 96.5% efficient and direct vented furnace, 80gal hot water tank.
- Soft close cabinet doors and drawers throughout and 41' upper cabinets in the kitchen.
- Quartz counter tops with under mount sinks in kitchen and bathrooms.
- Luxury Vinyl Plank flooring throughout the main floor and all bathrooms.
- Huge second floor laundry room for convenience.

Floor Plans

MAIN FLOOR



SECOND FLOOR



LEGAL BASEMENT SUITE

